

Severe Weather

1- 800- 438-0596

weather.gov/kc



National Weather Service
1803 N 7 Hwy
Pleasant Hill, MO 64080

1-800-438-0596

What to Report...use the T-E-L approach

Report the Time (T), Event (E), and Location (L).

Tornadoes, Funnel Clouds and Rotating Wall Clouds

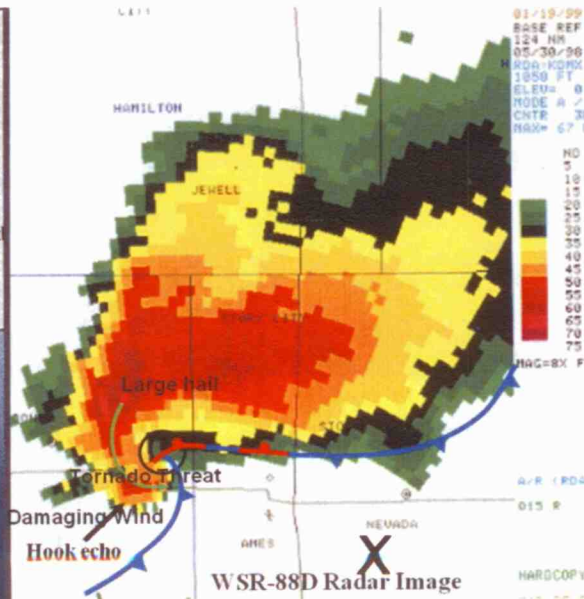
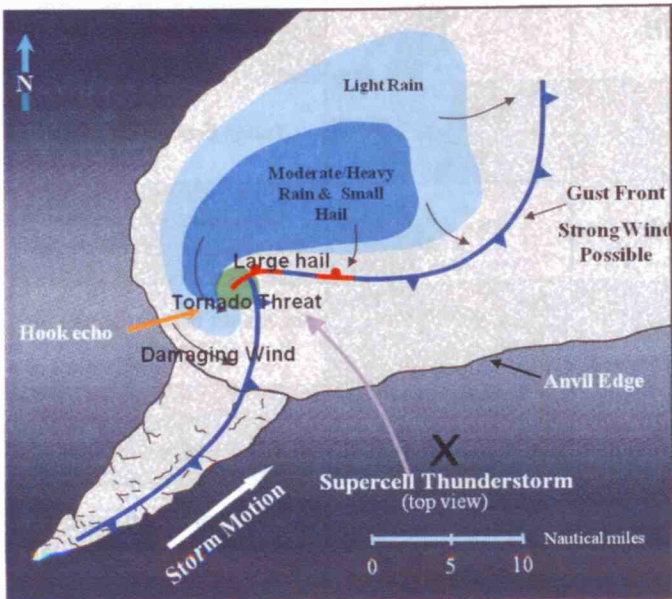


FUNNEL CLOUD - A rapidly rotating column of air (typically funnel-shaped) extending downward from the thunderstorm base, but *not* in contact with the ground.



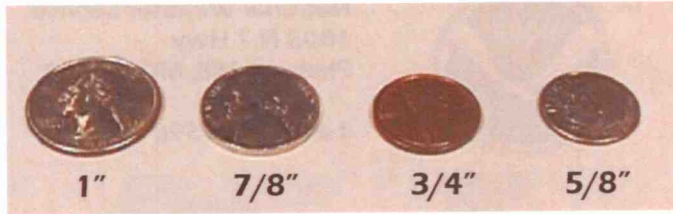
ROTATING WALL CLOUD - A persistent, often abrupt lowering at the cloud rain-free base.

TORNADO - A violently rotating column of air in contact with the ground.



How to Spot Tornadoes Safely - Determine the storm's movement. View from the right flank of the storm (the "X"). Have an escape route.

Hail ▶ Report referencing a coin, sports ball, or citrus



1 1/4"



1 3/4"



2 1/2"



2 3/4" (baseball)



4" (grapefruit)

Severe Weather Reporting

1- 800- 438-0596

Report the: Time (T), Event (E), and Location (L).

Estimating Winds...

Wind Speed (mph)		Effects on Land
Under 1		Calm; smoke rises vertically.
1-3		Smoke drift indicates wind direction; vanes do not move.
4-7		Wind felt on face; leaves rustle; vanes begin to move.
8-12		Leaves, small twigs in constant motion; light flags extended.
13-18		Dust, leaves, and loose paper raised up; small branches move.
19-24		Small trees begin to sway.
25-31		Large branches of trees in motion; whistling heard in wires
32-38		Whole trees in motion; resistance felt in walking against the wind.
39-46		Twigs broken off trees
47-54		Slight structural damage occurs; slate roofs blown off.
55-63		Small limbs broken (up to 1" in diameter)
64-72		Branches 1-3 inches broken. Shingles blown off roofs.
72 or higher		Substantial structural damage begins. Trees uprooted

What Verifies a Severe Thunderstorm Warning??



**Winds
58 mph or
Greater**

**Hail
1" or
Larger**



eSpotter - What is it?

Report severe weather online— to register and find out more go to:
<http://espotter.weather.gov>