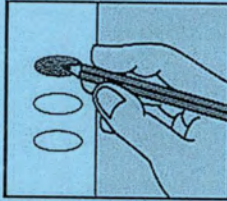


OFFICIAL GENERAL CITY/SCHOOL ELECTION BALLOT

LINN COUNTY

STATE OF KANSAS

NOVEMBER 2, 2021



**INSTRUCTIONS TO VOTER**

If you tear, deface, or make a mistake and wrongfully mark a ballot, you must return it to the election board and receive a new ballot.

To vote for a person, darken the oval to the left of the person's name.

To vote for a person whose name is not printed on the ballot, write the person's name in the blank space and darken the oval to the left.

**EXTENSION DISTRICT OFFICES**

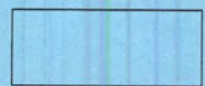
**FOR MARAIS DES CYGNES EXTENSION  
DISTRICT 16 BOARD MEMBER  
(VOTE FOR TWO OR FEWER)**

- TREVA BROYLES
- KENDRA BROWNING
- 

47

- 

54



SAMPLE

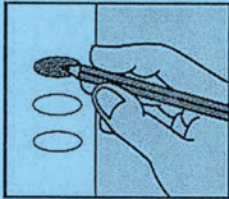


OFFICIAL GENERAL CITY/SCHOOL ELECTION BALLOT

LINN COUNTY

STATE OF KANSAS

NOVEMBER 2, 2021



INSTRUCTIONS TO VOTER

If you tear, deface, or make a mistake and wrongfully mark a ballot, you must return it to the election board and receive a new ballot.

To vote for a person, darken the oval to the left of the person's name.

To vote for a person whose name is not printed on the ballot, write the person's name in the blank space and darken the oval to the left.

SCHOOL DISTRICT OFFICES

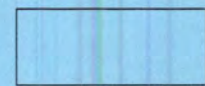
FOR SCHOOL BOARD MEMBER  
UNIFIED SCHOOL DISTRICT 344  
AT LARGE  
(VOTE FOR THREE OR FEWER)

- LESLIE DUMCUM
- KAYE HARDY
- CINDY SPENCE INMAN
- MEREDITH L. JOHNSON
- JONATHAN M. RAINES

EXTENSION DISTRICT OFFICES

FOR MARAIS DES CYGNES EXTENSION  
DISTRICT 16 BOARD MEMBER  
(VOTE FOR TWO OR FEWER)

- TREVA BROYLES
- KENDRA BROWNING



11  
21  
40  
41  
43  
47  
51

SAMPLE

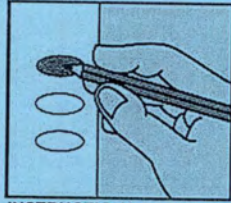


OFFICIAL GENERAL CITY/SCHOOL ELECTION BALLOT

LINN COUNTY

STATE OF KANSAS

NOVEMBER 2, 2021



INSTRUCTIONS TO VOTER

If you tear, deface, or make a mistake and wrongfully mark a ballot, you must return it to the election board and receive a new ballot.

To vote for a person, darken the oval to the left of the person's name.

To vote for a person whose name is not printed on the ballot, write the person's name in the blank space and darken the oval to the left.

EXTENSION DISTRICT OFFICES

FOR MARAIS DES CYGNES EXTENSION DISTRICT 16 BOARD MEMBER (VOTE FOR TWO OR FEWER)

KENDRA BROWNING

TREVA BROYLES

SAMPLE

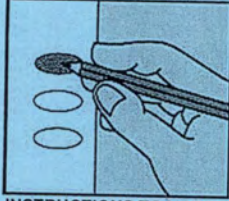


OFFICIAL GENERAL CITY/SCHOOL ELECTION BALLOT

LINN COUNTY

STATE OF KANSAS

NOVEMBER 2, 2021



**INSTRUCTIONS TO VOTER**

If you tear, deface, or make a mistake and wrongfully mark a ballot, you must return it to the election board and receive a new ballot.

To vote for a person, darken the oval to the left of the person's name.

To vote for a person whose name is not printed on the ballot, write the person's name in the blank space and darken the oval to the left.

**CITY OFFICES**

FOR CITY COUNCIL MEMBERS  
BLUE MOUND  
(VOTE FOR THREE OR FEWER)

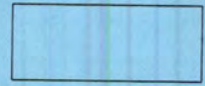
- BYRON D. COATES
- PAUL B MOELLER
- DONNIE RHYNERSON
- 
- 
- 

**EXTENSION DISTRICT OFFICES**

FOR MARAIS DES CYGNES EXTENSION  
DISTRICT 16 BOARD MEMBER  
(VOTE FOR TWO OR FEWER)

- KENDRA BROWNING
- TREVA BROYLES
- 
- 

SAMPLE



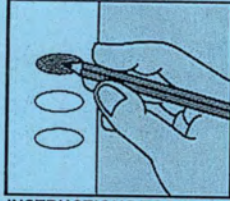


OFFICIAL GENERAL CITY/SCHOOL ELECTION BALLOT

LINN COUNTY

STATE OF KANSAS

NOVEMBER 2, 2021



**INSTRUCTIONS TO VOTER**

If you tear, deface, or make a mistake and wrongfully mark a ballot, you must return it to the election board and receive a new ballot.

To vote for a person, darken the oval to the left of the person's name.

To vote for a person whose name is not printed on the ballot, write the person's name in the blank space and darken the oval to the left.

**EXTENSION DISTRICT OFFICES**

**FOR MARAIS DES CYGNES EXTENSION DISTRICT 16 BOARD MEMBER (VOTE FOR TWO OR FEWER)**

TREVA BROYLES

KENDRA BROWNING

\_\_\_\_\_

\_\_\_\_\_

SAMPLE

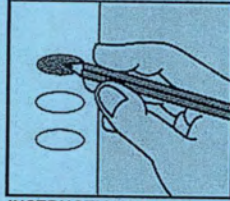


OFFICIAL GENERAL CITY/SCHOOL ELECTION BALLOT

LINN COUNTY

STATE OF KANSAS

NOVEMBER 2, 2021



INSTRUCTIONS TO VOTER

If you tear, deface, or make a mistake and wrongfully mark a ballot, you must return it to the election board and receive a new ballot.

To vote for a person, darken the oval to the left of the person's name.

To vote for a person whose name is not printed on the ballot, write the person's name in the blank space and darken the oval to the left.

SCHOOL DISTRICT OFFICES

FOR SCHOOL BOARD MEMBER  
UNIFIED SCHOOL DISTRICT 362  
POSITION 5  
(VOTE FOR ONE)

RITA BOYDSTON

EXTENSION DISTRICT OFFICES

FOR MARAIS DES CYGNES EXTENSION  
DISTRICT 16 BOARD MEMBER  
(VOTE FOR TWO OR FEWER)

TREVA BROYLES

KENDRA BROWNING

SAMPLE

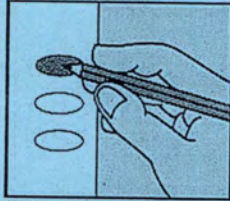


OFFICIAL GENERAL CITY/SCHOOL ELECTION BALLOT

LINN COUNTY

STATE OF KANSAS

NOVEMBER 2, 2021



INSTRUCTIONS TO VOTER

If you tear, deface, or make a mistake and wrongfully mark a ballot, you must return it to the election board and receive a new ballot.

To vote for a person, darken the oval to the left of the person's name.

To vote for a person whose name is not printed on the ballot, write the person's name in the blank space and darken the oval to the left.

SCHOOL DISTRICT OFFICES

FOR SCHOOL BOARD MEMBER  
UNIFIED SCHOOL DISTRICT 346  
POSITION 6  
(VOTE FOR ONE)

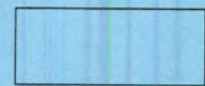
- KETTURAH (KITTY) RHYNERSON
- 

EXTENSION DISTRICT OFFICES

FOR MARAIS DES CYGNES EXTENSION  
DISTRICT 16 BOARD MEMBER  
(VOTE FOR TWO OR FEWER)

- TREVA BROYLES
- KENDRA BROWNING

SAMPLE



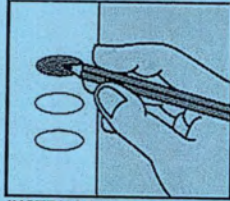


OFFICIAL GENERAL CITY/SCHOOL ELECTION BALLOT

LINN COUNTY

STATE OF KANSAS

NOVEMBER 2, 2021



INSTRUCTIONS TO VOTER

If you tear, deface, or make a mistake and wrongfully mark a ballot, you must return it to the election board and receive a new ballot.

To vote for a person, darken the oval to the left of the person's name.

To vote for a person whose name is not printed on the ballot, write the person's name in the blank space and darken the oval to the left.

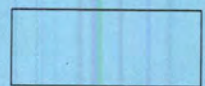
EXTENSION DISTRICT OFFICES

FOR MARAIS DES CYGNES EXTENSION DISTRICT 16 BOARD MEMBER (VOTE FOR TWO OR FEWER)

KENDRA BROWNING

TREVA BROYLES

SAMPLE



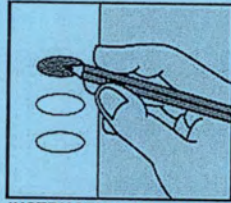


OFFICIAL GENERAL CITY/SCHOOL ELECTION BALLOT

LINN COUNTY

STATE OF KANSAS

NOVEMBER 2, 2021



INSTRUCTIONS TO VOTER

If you tear, deface, or make a mistake and wrongfully mark a ballot, you must return it to the election board and receive a new ballot.

To vote for a person, darken the oval to the left of the person's name.

To vote for a person whose name is not printed on the ballot, write the person's name in the blank space and darken the oval to the left.

SCHOOL DISTRICT OFFICES

FOR SCHOOL BOARD MEMBER  
UNIFIED SCHOOL DISTRICT 365  
POSITION 4  
(VOTE FOR ONE)

- KEVIN "GUNNER" CALLEY
- MICHAEL RICHARDS
- 

FOR SCHOOL BOARD MEMBER  
UNIFIED SCHOOL DISTRICT 365  
POSITION 5  
(VOTE FOR ONE)

- SONYA MARTIN
- MARK A. POWLS
- 

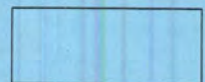
FOR SCHOOL BOARD MEMBER  
UNIFIED SCHOOL DISTRICT 365  
POSITION 6  
(VOTE FOR ONE)

- GINA WITHERSPOON
- 

EXTENSION DISTRICT OFFICES

FOR MARAIS DES CYGNES EXTENSION  
DISTRICT 16 BOARD MEMBER  
(VOTE FOR TWO OR FEWER)

- KENDRA BROWNING
- TREVA BROYLES
- 



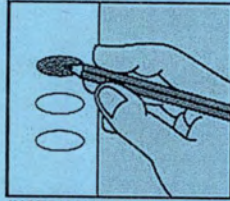


OFFICIAL GENERAL CITY/SCHOOL ELECTION BALLOT

LINN COUNTY

STATE OF KANSAS

NOVEMBER 2, 2021



INSTRUCTIONS TO VOTER

If you tear, deface, or make a mistake and wrongfully mark a ballot, you must return it to the election board and receive a new ballot.

To vote for a person, darken the oval to the left of the person's name.

To vote for a person whose name is not printed on the ballot, write the person's name in the blank space and darken the oval to the left.

SCHOOL DISTRICT OFFICES

FOR SCHOOL BOARD MEMBER  
UNIFIED SCHOOL DISTRICT 362  
POSITION 5  
(VOTE FOR ONE)

- RITA BOYDSTON
- 

EXTENSION DISTRICT OFFICES

FOR MARAIS DES CYGNES EXTENSION  
DISTRICT 16 BOARD MEMBER  
(VOTE FOR TWO OR FEWER)

- KENDRA BROWNING
- TREVA BROYLES

SAMPLE

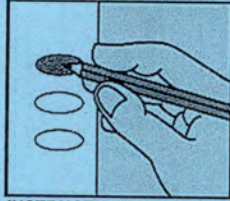


OFFICIAL GENERAL CITY/SCHOOL ELECTION BALLOT

LINN COUNTY

STATE OF KANSAS

NOVEMBER 2, 2021



INSTRUCTIONS TO VOTER

If you tear, deface, or make a mistake and wrongfully mark a ballot, you must return it to the election board and receive a new ballot.

To vote for a person, darken the oval to the left of the person's name.

To vote for a person whose name is not printed on the ballot, write the person's name in the blank space and darken the oval to the left.

CITY OFFICES

FOR CITY COUNCIL MEMBERS  
PARKER  
(VOTE FOR THREE OR FEWER)

GARY EARLEY

JERRY SUMMERS

EXTENSION DISTRICT OFFICES

FOR MARAIS DES CYGNES EXTENSION  
DISTRICT 16 BOARD MEMBER  
(VOTE FOR TWO OR FEWER)

KENDRA BROWNING

TREVA BROYLES

SAMPLE

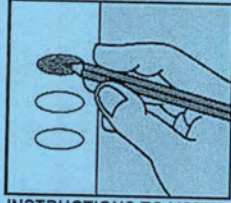


OFFICIAL GENERAL CITY/SCHOOL ELECTION BALLOT

LINN COUNTY

STATE OF KANSAS

NOVEMBER 2, 2021



INSTRUCTIONS TO VOTER

If you tear, deface, or make a mistake and wrongfully mark a ballot, you must return it to the election board and receive a new ballot.

To vote for a person, darken the oval to the left of the person's name.

To vote for a person whose name is not printed on the ballot, write the person's name in the blank space and darken the oval to the left.

EXTENSION DISTRICT OFFICES

FOR MARAIS DES CYGNES EXTENSION DISTRICT 16 BOARD MEMBER (VOTE FOR TWO OR FEWER)

KENDRA BROWNING

TREVA BROYLES

SAMPLE

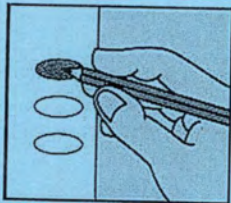


OFFICIAL GENERAL CITY/SCHOOL ELECTION BALLOT

LINN COUNTY

STATE OF KANSAS

NOVEMBER 2, 2021



INSTRUCTIONS TO VOTER

If you tear, deface, or make a mistake and wrongfully mark a ballot, you must return it to the election board and receive a new ballot.

To vote for a person, darken the oval to the left of the person's name.

To vote for a person whose name is not printed on the ballot, write the person's name in the blank space and darken the oval to the left.

SCHOOL DISTRICT OFFICES

FOR SCHOOL BOARD MEMBER  
UNIFIED SCHOOL DISTRICT 362  
POSITION 6  
(VOTE FOR ONE)

WADE TEAGARDEN

EXTENSION DISTRICT OFFICES

FOR MARAIS DES CYGNES EXTENSION  
DISTRICT 16 BOARD MEMBER  
(VOTE FOR TWO OR FEWER)

KENDRA BROWNING

TREVA BROYLES

SAMPLE

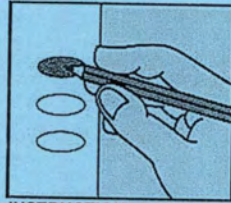


OFFICIAL GENERAL CITY/SCHOOL ELECTION BALLOT

LINN COUNTY

STATE OF KANSAS

NOVEMBER 2, 2021



**INSTRUCTIONS TO VOTER**

If you tear, deface, or make a mistake and wrongfully mark a ballot, you must return it to the election board and receive a new ballot.

To vote for a person, darken the oval to the left of the person's name.

To vote for a person whose name is not printed on the ballot, write the person's name in the blank space and darken the oval to the left.

**SCHOOL DISTRICT OFFICES**

FOR SCHOOL BOARD MEMBER  
UNIFIED SCHOOL DISTRICT 362  
POSITION 5  
(VOTE FOR ONE)

- RITA BOYDSTON
- 

**EXTENSION DISTRICT OFFICES**

FOR MARAIS DES CYGNES EXTENSION  
DISTRICT 16 BOARD MEMBER  
(VOTE FOR TWO OR FEWER)

- KENDRA BROWNING
- TREVA BROYLES

\_\_\_\_\_

\_\_\_\_\_

SAMPLE

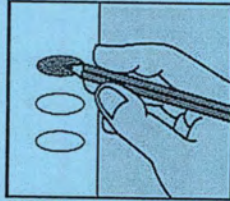


OFFICIAL GENERAL CITY/SCHOOL ELECTION BALLOT

LINN COUNTY

STATE OF KANSAS

NOVEMBER 2, 2021



**INSTRUCTIONS TO VOTER**

If you tear, deface, or make a mistake and wrongfully mark a ballot, you must return it to the election board and receive a new ballot.

To vote for a person, darken the oval to the left of the person's name.

To vote for a person whose name is not printed on the ballot, write the person's name in the blank space and darken the oval to the left.

**EXTENSION DISTRICT OFFICES**

**FOR MARAIS DES CYGNES EXTENSION DISTRICT 16 BOARD MEMBER (VOTE FOR TWO OR FEWER)**

- TREVA BROYLES
- KENDRA BROWNING
- 
- 

SAMPLE



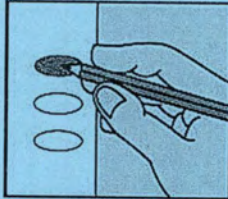


OFFICIAL GENERAL CITY/SCHOOL ELECTION BALLOT

LINN COUNTY

STATE OF KANSAS

NOVEMBER 2, 2021



INSTRUCTIONS TO VOTER

If you tear, deface, or make a mistake and wrongfully mark a ballot, you must return it to the election board and receive a new ballot.

To vote for a person, darken the oval to the left of the person's name.

To vote for a person whose name is not printed on the ballot, write the person's name in the blank space and darken the oval to the left.

SCHOOL DISTRICT OFFICES

FOR SCHOOL BOARD MEMBER  
UNIFIED SCHOOL DISTRICT 346  
POSITION 6  
(VOTE FOR ONE)

- KETTURAH (KITTY) RHYNERSON
- 

EXTENSION DISTRICT OFFICES

FOR MARAIS DES CYGNES EXTENSION  
DISTRICT 16 BOARD MEMBER  
(VOTE FOR TWO OR FEWER)

- TREVA BROYLES
- KENDRA BROWNING
- 

SAMPLE

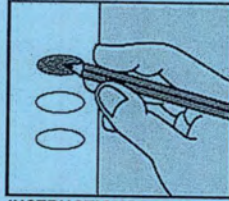


OFFICIAL GENERAL CITY/SCHOOL ELECTION BALLOT

LINN COUNTY

STATE OF KANSAS

NOVEMBER 2, 2021



INSTRUCTIONS TO VOTER

If you tear, deface, or make a mistake and wrongfully mark a ballot, you must return it to the election board and receive a new ballot.

To vote for a person, darken the oval to the left of the person's name.

To vote for a person whose name is not printed on the ballot, write the person's name in the blank space and darken the oval to the left.

SCHOOL DISTRICT OFFICES

FOR SCHOOL BOARD MEMBER  
UNIFIED SCHOOL DISTRICT 346  
POSITION 6  
(VOTE FOR ONE)

KETTURAH (KITTY) RHYNERSON

EXTENSION DISTRICT OFFICES

FOR MARAIS DES CYGNES EXTENSION  
DISTRICT 16 BOARD MEMBER  
(VOTE FOR TWO OR FEWER)

KENDRA BROWNING

TREVA BROYLES

SAMPLE

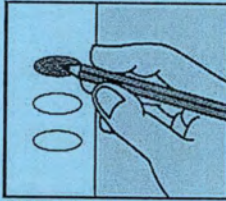


OFFICIAL GENERAL CITY/SCHOOL ELECTION BALLOT

LINN COUNTY

STATE OF KANSAS

NOVEMBER 2, 2021



INSTRUCTIONS TO VOTER

If you tear, deface, or make a mistake and wrongfully mark a ballot, you must return it to the election board and receive a new ballot.

To vote for a person, darken the oval to the left of the person's name.

To vote for a person whose name is not printed on the ballot, write the person's name in the blank space and darken the oval to the left.

SCHOOL DISTRICT OFFICES

FOR SCHOOL BOARD MEMBER  
UNIFIED SCHOOL DISTRICT 346  
POSITION 5  
(VOTE FOR ONE)

- MATT HIGGINS
- 

EXTENSION DISTRICT OFFICES

FOR MARAIS DES CYGNES EXTENSION  
DISTRICT 16 BOARD MEMBER  
(VOTE FOR TWO OR FEWER)

- TREVA BROYLES
- KENDRA BROWNING

- 
- 



SAMPLE

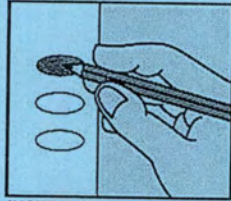


OFFICIAL GENERAL CITY/SCHOOL ELECTION BALLOT

LINN COUNTY

STATE OF KANSAS

NOVEMBER 2, 2021



INSTRUCTIONS TO VOTER

If you tear, deface, or make a mistake and wrongfully mark a ballot, you must return it to the election board and receive a new ballot.

To vote for a person, darken the oval to the left of the person's name.

To vote for a person whose name is not printed on the ballot, write the person's name in the blank space and darken the oval to the left.

SCHOOL DISTRICT OFFICES

FOR SCHOOL BOARD MEMBER  
UNIFIED SCHOOL DISTRICT 344  
AT LARGE  
(VOTE FOR THREE OR FEWER)

- CINDY SPENCE INMAN
- MEREDITH L. JOHNSON
- JONATHAN M. RAINES
- LESLIE DUMCUM
- KAYE HARDY

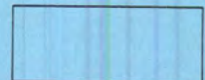
48

53

EXTENSION DISTRICT OFFICES

FOR MARAIS DES CYGNES EXTENSION  
DISTRICT 16 BOARD MEMBER  
(VOTE FOR TWO OR FEWER)

- TREVA BROYLES
- KENDRA BROWNING



SAMPLE

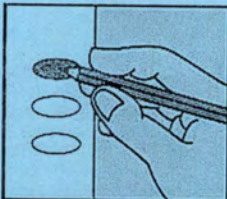


OFFICIAL GENERAL CITY/SCHOOL ELECTION BALLOT

LINN COUNTY

STATE OF KANSAS

NOVEMBER 2, 2021



INSTRUCTIONS TO VOTER

If you tear, deface, or make a mistake and wrongfully mark a ballot, you must return it to the election board and receive a new ballot.

To vote for a person, darken the oval to the left of the person's name.

To vote for a person whose name is not printed on the ballot, write the person's name in the blank space and darken the oval to the left.

SCHOOL DISTRICT OFFICES

FOR SCHOOL BOARD MEMBER  
UNIFIED SCHOOL DISTRICT 362  
POSITION 4  
(VOTE FOR ONE)

\_\_\_\_\_

EXTENSION DISTRICT OFFICES

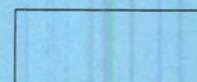
FOR MARAIS DES CYGNES EXTENSION  
DISTRICT 16 BOARD MEMBER  
(VOTE FOR TWO OR FEWER)

TREVA BROYLES

KENDRA BROWNING

\_\_\_\_\_

\_\_\_\_\_



SAMPLE

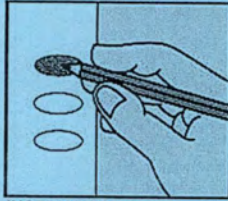


OFFICIAL GENERAL CITY/SCHOOL ELECTION BALLOT

LINN COUNTY

STATE OF KANSAS

NOVEMBER 2, 2021



INSTRUCTIONS TO VOTER

If you tear, deface, or make a mistake and wrongfully mark a ballot, you must return it to the election board and receive a new ballot.

To vote for a person, darken the oval to the left of the person's name.

To vote for a person whose name is not printed on the ballot, write the person's name in the blank space and darken the oval to the left.

CITY OFFICES

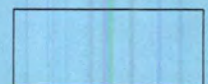
FOR CITY COUNCIL MEMBERS  
LA CYGNE  
(VOTE FOR THREE OR FEWER)

- DAVID BRENNEMAN
- THOMAS W. CAPP
- KEITH STOKER

EXTENSION DISTRICT OFFICES

FOR MARAIS DES CYGNES EXTENSION  
DISTRICT 16 BOARD MEMBER  
(VOTE FOR TWO OR FEWER)

- TREVA BROYLES
- KENDRA BROWNING



SAMPLE

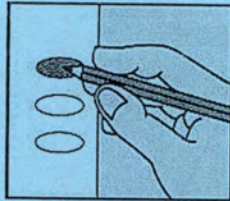


OFFICIAL GENERAL CITY/SCHOOL ELECTION BALLOT

LINN COUNTY

STATE OF KANSAS

NOVEMBER 2, 2021



INSTRUCTIONS TO VOTER

If you tear, deface, or make a mistake and wrongfully mark a ballot, you must return it to the election board and receive a new ballot.

To vote for a person, darken the oval to the left of the person's name.

To vote for a person whose name is not printed on the ballot, write the person's name in the blank space and darken the oval to the left.

SCHOOL DISTRICT OFFICES

FOR SCHOOL BOARD MEMBER  
UNIFIED SCHOOL DISTRICT 346  
POSITION 1-UNEXPIRED TERM  
(VOTE FOR ONE)

DANIEL EARNEST

\_\_\_\_\_

EXTENSION DISTRICT OFFICES

FOR MARAIS DES CYGNES EXTENSION  
DISTRICT 16 BOARD MEMBER  
(VOTE FOR TWO OR FEWER)

TREVA BROYLES

KENDRA BROWNING

\_\_\_\_\_

\_\_\_\_\_

SAMPLE

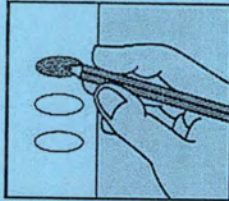


OFFICIAL GENERAL CITY/SCHOOL ELECTION BALLOT

LINN COUNTY

STATE OF KANSAS

NOVEMBER 2, 2021



INSTRUCTIONS TO VOTER

If you tear, deface, or make a mistake and wrongfully mark a ballot, you must return it to the election board and receive a new ballot.

To vote for a person, darken the oval to the left of the person's name.

To vote for a person whose name is not printed on the ballot, write the person's name in the blank space and darken the oval to the left.

SCHOOL DISTRICT OFFICES

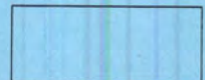
FOR SCHOOL BOARD MEMBER  
UNIFIED SCHOOL DISTRICT 344  
AT LARGE  
(VOTE FOR THREE OR FEWER)

- JONATHAN M. RAINES
- LESLIE DUMCUM
- KAYE HARDY
- CINDY SPENCE INMAN
- MEREDITH L. JOHNSON

EXTENSION DISTRICT OFFICES

FOR MARAIS DES CYGNES EXTENSION  
DISTRICT 16 BOARD MEMBER  
(VOTE FOR TWO OR FEWER)

- TREVA BROYLES
- KENDRA BROWNING



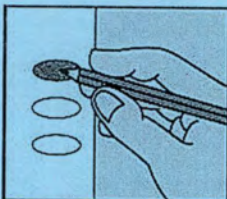


OFFICIAL GENERAL CITY/SCHOOL ELECTION BALLOT

LINN COUNTY

STATE OF KANSAS

NOVEMBER 2, 2021



INSTRUCTIONS TO VOTER

If you tear, deface, or make a mistake and wrongfully mark a ballot, you must return it to the election board and receive a new ballot.

To vote for a person, darken the oval to the left of the person's name.

To vote for a person whose name is not printed on the ballot, write the person's name in the blank space and darken the oval to the left.

EXTENSION DISTRICT OFFICES

FOR MARAIS DES CYGNES EXTENSION DISTRICT 16 BOARD MEMBER (VOTE FOR TWO OR FEWER)

- TREVA BROYLES
KENDRA BROWNING

CITY OFFICES

FOR CITY COUNCIL MEMBERS PLEASANTON (VOTE FOR THREE OR FEWER)

- ROCHELLE SCHRECKHISE
JOSEPH WHITAKER
AARON PORTMANN

SCHOOL DISTRICT OFFICES

FOR SCHOOL BOARD MEMBER UNIFIED SCHOOL DISTRICT 344 AT LARGE (VOTE FOR THREE OR FEWER)

- JONATHAN M. RAINES
LESLIE DUMCUM
KAYE HARDY
CINDY SPENGE INMAN
MEREDITH L. JOHNSON

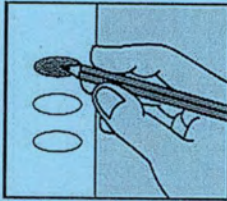


OFFICIAL GENERAL CITY/SCHOOL ELECTION BALLOT

LINN COUNTY

STATE OF KANSAS

NOVEMBER 2, 2021



INSTRUCTIONS TO VOTER

If you tear, deface, or make a mistake and wrongfully mark a ballot, you must return it to the election board and receive a new ballot.

To vote for a person, darken the oval to the left of the person's name.

To vote for a person whose name is not printed on the ballot, write the person's name in the blank space and darken the oval to the left.

EXTENSION DISTRICT OFFICES

FOR MARAIS DES CYGNES EXTENSION DISTRICT 16 BOARD MEMBER (VOTE FOR TWO OR FEWER)

KENDRA BROWNING

TREVA BROYLES

CITY OFFICES

FOR CITY COUNCIL MEMBERS PLEASANTON (VOTE FOR THREE OR FEWER)

AARON PORTMANN

ROCHELLE SCHRECKHISE

JOSEPH WHITAKER

SCHOOL DISTRICT OFFICES

FOR SCHOOL BOARD MEMBER UNIFIED SCHOOL DISTRICT 344 AT LARGE (VOTE FOR THREE OR FEWER)

KAYE HARDY

CINDY SPENCE INMAN

MEREDITH L. JOHNSON

JONATHAN M. RAINES

LESLIE DUMCUM



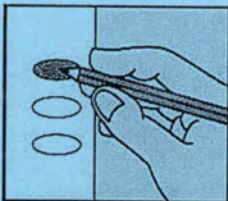


OFFICIAL GENERAL CITY/SCHOOL ELECTION BALLOT

LINN COUNTY

STATE OF KANSAS

NOVEMBER 2, 2021



INSTRUCTIONS TO VOTER

If you tear, deface, or make a mistake and wrongfully mark a ballot, you must return it to the election board and receive a new ballot.

To vote for a person, darken the oval to the left of the person's name.

To vote for a person whose name is not printed on the ballot, write the person's name in the blank space and darken the oval to the left.

SCHOOL DISTRICT OFFICES

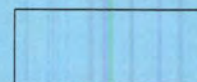
FOR SCHOOL BOARD MEMBER  
UNIFIED SCHOOL DISTRICT 344  
AT LARGE  
(VOTE FOR THREE OR FEWER)

- KAYE HARDY
- CINDY SPENCE INMAN
- MEREDITH L. JOHNSON
- JONATHAN M. RAINES
- LESLIE DUMCUM

EXTENSION DISTRICT OFFICES

FOR MARAIS DES CYGNES EXTENSION  
DISTRICT 16 BOARD MEMBER  
(VOTE FOR TWO OR FEWER)

- KENDRA BROWNING
- TREVA BROYLES



SAMPLE

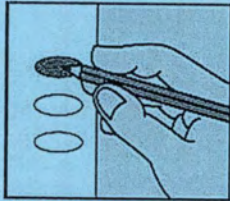


OFFICIAL GENERAL CITY/SCHOOL ELECTION BALLOT

LINN COUNTY

STATE OF KANSAS

NOVEMBER 2, 2021



INSTRUCTIONS TO VOTER

If you tear, deface, or make a mistake and wrongfully mark a ballot, you must return it to the election board and receive a new ballot.

To vote for a person, darken the oval to the left of the person's name.

To vote for a person whose name is not printed on the ballot, write the person's name in the blank space and darken the oval to the left.

SCHOOL DISTRICT OFFICES

FOR SCHOOL BOARD MEMBER  
UNIFIED SCHOOL DISTRICT 362  
POSITION 6  
(VOTE FOR ONE)

WADE TEAGARDEN

EXTENSION DISTRICT OFFICES

FOR MARAIS DES CYGNES EXTENSION  
DISTRICT 16 BOARD MEMBER  
(VOTE FOR TWO OR FEWER)

KENDRA BROWNING

TREVA BROYLES

SAMPLE

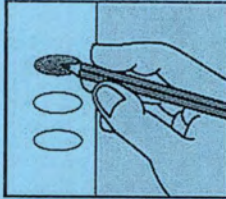


OFFICIAL GENERAL CITY/SCHOOL ELECTION BALLOT

LINN COUNTY

STATE OF KANSAS

NOVEMBER 2, 2021



INSTRUCTIONS TO VOTER

If you tear, deface, or make a mistake and wrongfully mark a ballot, you must return it to the election board and receive a new ballot.

To vote for a person, darken the oval to the left of the person's name.

To vote for a person whose name is not printed on the ballot, write the person's name in the blank space and darken the oval to the left.

CITY OFFICES

FOR CITY COUNCIL MEMBERS  
LA CYGNE  
(VOTE FOR THREE OR FEWER)

- THOMAS W. CAPP
- KEITH STOKER
- DAVID BRENNEMAN

\_\_\_\_\_

\_\_\_\_\_

\_\_\_\_\_

SCHOOL DISTRICT OFFICES

FOR SCHOOL BOARD MEMBER  
UNIFIED SCHOOL DISTRICT 362  
POSITION 6  
(VOTE FOR ONE)

- WADE TEAGARDEN
- \_\_\_\_\_

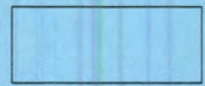
EXTENSION DISTRICT OFFICES

FOR MARAIS DES CYGNES EXTENSION  
DISTRICT 16 BOARD MEMBER  
(VOTE FOR TWO OR FEWER)

- KENDRA BROWNING
- TREVA BROYLES

\_\_\_\_\_

\_\_\_\_\_



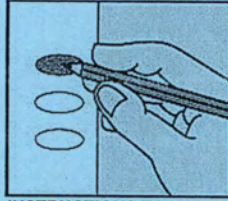


OFFICIAL GENERAL CITY/SCHOOL ELECTION BALLOT

LINN COUNTY

STATE OF KANSAS

NOVEMBER 2, 2021



INSTRUCTIONS TO VOTER

If you tear, deface, or make a mistake and wrongfully mark a ballot, you must return it to the election board and receive a new ballot.

To vote for a person, darken the oval to the left of the person's name.

To vote for a person whose name is not printed on the ballot, write the person's name in the blank space and darken the oval to the left.

CITY OFFICES

FOR CITY COUNCIL MEMBERS  
LA CYGNE  
(VOTE FOR THREE OR FEWER)

- THOMAS W. CAPP
- KEITH STOKER
- DAVID BRENNEMAN

\_\_\_\_\_

\_\_\_\_\_

\_\_\_\_\_

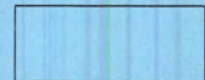
EXTENSION DISTRICT OFFICES

FOR MARAIS DES CYGNES EXTENSION  
DISTRICT 16 BOARD MEMBER  
(VOTE FOR TWO OR FEWER)

- KENDRA BROWNING
- TREVA BROYLES

\_\_\_\_\_

\_\_\_\_\_



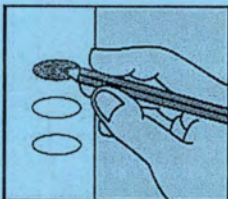


OFFICIAL GENERAL CITY/SCHOOL ELECTION BALLOT

LINN COUNTY

STATE OF KANSAS

NOVEMBER 2, 2021



INSTRUCTIONS TO VOTER

If you tear, deface, or make a mistake and wrongfully mark a ballot, you must return it to the election board and receive a new ballot.

To vote for a person, darken the oval to the left of the person's name.

To vote for a person whose name is not printed on the ballot, write the person's name in the blank space and darken the oval to the left.

SCHOOL DISTRICT OFFICES

FOR SCHOOL BOARD MEMBER  
UNIFIED SCHOOL DISTRICT 346  
POSITION 1-UNEXPIRED TERM  
(VOTE FOR ONE)

DANIEL EARNEST

EXTENSION DISTRICT OFFICES

FOR MARAIS DES CYGNES EXTENSION  
DISTRICT 16 BOARD MEMBER  
(VOTE FOR TWO OR FEWER)

TREVA BROYLES

KENDRA BROWNING

SAMPLE

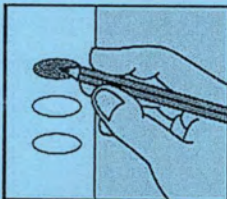


OFFICIAL GENERAL CITY/SCHOOL ELECTION BALLOT

LINN COUNTY

STATE OF KANSAS

NOVEMBER 2, 2021



INSTRUCTIONS TO VOTER

If you tear, deface, or make a mistake and wrongfully mark a ballot, you must return it to the election board and receive a new ballot.

To vote for a person, darken the oval to the left of the person's name.

To vote for a person whose name is not printed on the ballot, write the person's name in the blank space and darken the oval to the left.

SCHOOL DISTRICT OFFICES

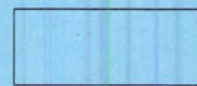
FOR SCHOOL BOARD MEMBER  
UNIFIED SCHOOL DISTRICT 344  
AT LARGE  
(VOTE FOR THREE OR FEWER)

- MEREDITH L. JOHNSON
- JONATHAN M. RAINES
- LESLIE DUMCUM
- KAYE HARDY
- CINDY SPENCE INMAN

EXTENSION DISTRICT OFFICES

FOR MARAIS DES CYGNES EXTENSION  
DISTRICT 16 BOARD MEMBER  
(VOTE FOR TWO OR FEWER)

- TREVA BROYLES
- KENDRA BROWNING



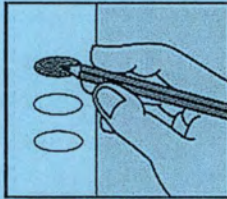


OFFICIAL GENERAL CITY/SCHOOL ELECTION BALLOT

LINN COUNTY

STATE OF KANSAS

NOVEMBER 2, 2021



INSTRUCTIONS TO VOTER

If you tear, deface, or make a mistake and wrongfully mark a ballot, you must return it to the election board and receive a new ballot.

To vote for a person, darken the oval to the left of the person's name.

To vote for a person whose name is not printed on the ballot, write the person's name in the blank space and darken the oval to the left.

CITY OFFICES

FOR MAYOR  
PRESCOTT  
(VOTE FOR ONE)

KEVIN L. WOOD

FOR CITY COUNCIL MEMBERS  
PRESCOTT  
(VOTE FOR TWO OR FEWER)

JOHN MALONEY

RONALD W. ROBERTS

SCHOOL DISTRICT OFFICES

FOR SCHOOL BOARD MEMBER  
UNIFIED SCHOOL DISTRICT 346  
POSITION 1-UNEXPIRED TERM  
(VOTE FOR ONE)

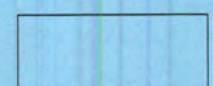
DANIEL EARNEST

EXTENSION DISTRICT OFFICES

FOR MARAIS DES CYGNES EXTENSION  
DISTRICT 16 BOARD MEMBER  
(VOTE FOR TWO OR FEWER)

TREVA BROYLES

KENDRA BROWNING



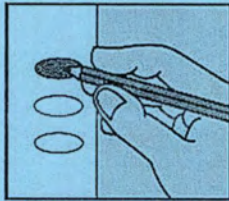


OFFICIAL GENERAL CITY/SCHOOL ELECTION BALLOT

LINN COUNTY

STATE OF KANSAS

NOVEMBER 2, 2021



INSTRUCTIONS TO VOTER

If you tear, deface, or make a mistake and wrongfully mark a ballot, you must return it to the election board and receive a new ballot.

To vote for a person, darken the oval to the left of the person's name.

To vote for a person whose name is not printed on the ballot, write the person's name in the blank space and darken the oval to the left.

SCHOOL DISTRICT OFFICES

FOR SCHOOL BOARD MEMBER  
UNIFIED SCHOOL DISTRICT 346  
POSITION 6  
(VOTE FOR ONE)

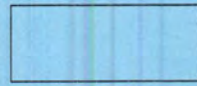
- KETTURAH (KITTY) RHYNERSON
- 

EXTENSION DISTRICT OFFICES

FOR MARAIS DES CYGNES EXTENSION  
DISTRICT 16 BOARD MEMBER  
(VOTE FOR TWO OR FEWER)

- KENDRA BROWNING
- TREVA BROYLES
- 

SAMPLE



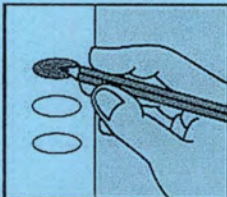


OFFICIAL GENERAL CITY/SCHOOL ELECTION BALLOT

LINN COUNTY

STATE OF KANSAS

NOVEMBER 2, 2021



INSTRUCTIONS TO VOTER

If you tear, deface, or make a mistake and wrongfully mark a ballot, you must return it to the election board and receive a new ballot.

To vote for a person, darken the oval to the left of the person's name.

To vote for a person whose name is not printed on the ballot, write the person's name in the blank space and darken the oval to the left.

SCHOOL DISTRICT OFFICES

FOR SCHOOL BOARD MEMBER  
UNIFIED SCHOOL DISTRICT 346  
POSITION 4  
(VOTE FOR ONE)

TRACY L. SPRINGER

\_\_\_\_\_

EXTENSION DISTRICT OFFICES

FOR MARAIS DES CYGNES EXTENSION  
DISTRICT 16 BOARD MEMBER  
(VOTE FOR TWO OR FEWER)

KENDRA BROWNING

TREVA BROYLES

\_\_\_\_\_

\_\_\_\_\_

SAMPLE

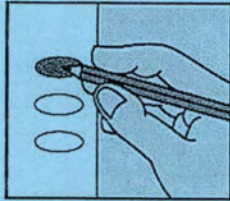


OFFICIAL GENERAL CITY/SCHOOL ELECTION BALLOT

LINN COUNTY

STATE OF KANSAS

NOVEMBER 2, 2021



INSTRUCTIONS TO VOTER

If you tear, deface, or make a mistake and wrongfully mark a ballot, you must return it to the election board and receive a new ballot.

To vote for a person, darken the oval to the left of the person's name.

To vote for a person whose name is not printed on the ballot, write the person's name in the blank space and darken the oval to the left.

SCHOOL DISTRICT OFFICES

FOR SCHOOL BOARD MEMBER  
UNIFIED SCHOOL DISTRICT 362  
POSITION 6  
(VOTE FOR ONE)

WADE TEAGARDEN

EXTENSION DISTRICT OFFICES

FOR MARAIS DES CYGNES EXTENSION  
DISTRICT 16 BOARD MEMBER  
(VOTE FOR TWO OR FEWER)

TREVA BROYLES

KENDRA BROWNING

SAMPLE

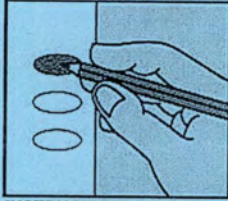


OFFICIAL GENERAL CITY/SCHOOL ELECTION BALLOT

LINN COUNTY

STATE OF KANSAS

NOVEMBER 2, 2021



INSTRUCTIONS TO VOTER

If you tear, deface, or make a mistake and wrongfully mark a ballot, you must return it to the election board and receive a new ballot.

To vote for a person, darken the oval to the left of the person's name.

To vote for a person whose name is not printed on the ballot, write the person's name in the blank space and darken the oval to the left.

SCHOOL DISTRICT OFFICES

FOR SCHOOL BOARD MEMBER  
UNIFIED SCHOOL DISTRICT 346  
POSITION 4  
(VOTE FOR ONE)

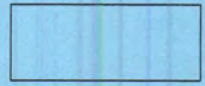
- TRACY L. SPRINGER
- 

EXTENSION DISTRICT OFFICES

FOR MARAIS DES CYGNES EXTENSION  
DISTRICT 16 BOARD MEMBER  
(VOTE FOR TWO OR FEWER)

- KENDRA BROWNING
- TREVA BROYLES

SAMPLE



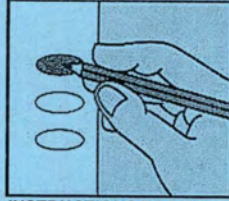


OFFICIAL GENERAL CITY/SCHOOL ELECTION BALLOT

LINN COUNTY

STATE OF KANSAS

NOVEMBER 2, 2021



INSTRUCTIONS TO VOTER

If you tear, deface, or make a mistake and wrongfully mark a ballot, you must return it to the election board and receive a new ballot.

To vote for a person, darken the oval to the left of the person's name.

To vote for a person whose name is not printed on the ballot, write the person's name in the blank space and darken the oval to the left.

SCHOOL DISTRICT OFFICES

FOR SCHOOL BOARD MEMBER  
UNIFIED SCHOOL DISTRICT 346  
POSITION 5  
(VOTE FOR ONE)

MATT HIGGINS

\_\_\_\_\_

EXTENSION DISTRICT OFFICES

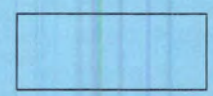
FOR MARAIS DES CYGNES EXTENSION  
DISTRICT 16 BOARD MEMBER  
(VOTE FOR TWO OR FEWER)

KENDRA BROWNING

TREVA BROYLES

\_\_\_\_\_

\_\_\_\_\_



SAMPLE

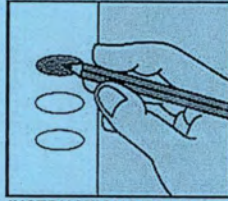


OFFICIAL GENERAL CITY/SCHOOL ELECTION BALLOT

LINN COUNTY

STATE OF KANSAS

NOVEMBER 2, 2021



INSTRUCTIONS TO VOTER

If you tear, deface, or make a mistake and wrongfully mark a ballot, you must return it to the election board and receive a new ballot.

To vote for a person, darken the oval to the left of the person's name.

To vote for a person whose name is not printed on the ballot, write the person's name in the blank space and darken the oval to the left.

SCHOOL DISTRICT OFFICES

FOR SCHOOL BOARD MEMBER  
UNIFIED SCHOOL DISTRICT 344  
AT LARGE  
(VOTE FOR THREE OR FEWER)

- LESLIE DUMCUM
- KAYE HARDY
- CINDY SPENCE INMAN
- MEREDITH L. JOHNSON
- JONATHAN M. RAINES

\_\_\_\_\_

\_\_\_\_\_

\_\_\_\_\_

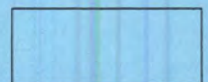
EXTENSION DISTRICT OFFICES

FOR MARAIS DES CYGNES EXTENSION  
DISTRICT 16 BOARD MEMBER  
(VOTE FOR TWO OR FEWER)

- KENDRA BROWNING
- TREVA BROYLES

\_\_\_\_\_

\_\_\_\_\_



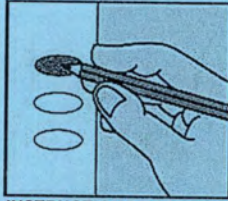


OFFICIAL GENERAL CITY/SCHOOL ELECTION BALLOT

LINN COUNTY

STATE OF KANSAS

NOVEMBER 2, 2021



INSTRUCTIONS TO VOTER

If you tear, deface, or make a mistake and wrongfully mark a ballot, you must return it to the election board and receive a new ballot.

To vote for a person, darken the oval to the left of the person's name.

To vote for a person whose name is not printed on the ballot, write the person's name in the blank space and darken the oval to the left.

CITY OFFICES

FOR CITY COUNCIL MEMBERS  
MOUND CITY  
(VOTE FOR THREE OR FEWER)

- CODY BECKMAN
- MEGAN PURVIS
- FANCHION SHADDEN

SCHOOL DISTRICT OFFICES

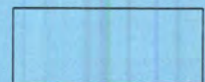
FOR SCHOOL BOARD MEMBER  
UNIFIED SCHOOL DISTRICT 346  
POSITION 5  
(VOTE FOR ONE)

- MATT HIGGINS
- 

EXTENSION DISTRICT OFFICES

FOR MARAIS DES CYGNES EXTENSION  
DISTRICT 16 BOARD MEMBER  
(VOTE FOR TWO OR FEWER)

- KENDRA BROWNING
- TREVA BROYLES



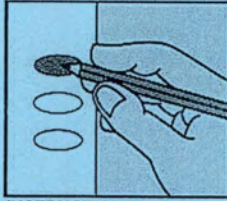


OFFICIAL GENERAL CITY/SCHOOL ELECTION BALLOT

LINN COUNTY

STATE OF KANSAS

NOVEMBER 2, 2021



INSTRUCTIONS TO VOTER

If you tear, deface, or make a mistake and wrongfully mark a ballot, you must return it to the election board and receive a new ballot.

To vote for a person, darken the oval to the left of the person's name.

To vote for a person whose name is not printed on the ballot, write the person's name in the blank space and darken the oval to the left.

CITY OFFICES

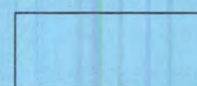
FOR CITY COUNCIL MEMBERS  
MOUND CITY  
(VOTE FOR THREE OR FEWER)

- CODY BECKMAN
- MEGAN PURVIS
- FANCHION SHADDEN

EXTENSION DISTRICT OFFICES

FOR MARAIS DES CYGNES EXTENSION  
DISTRICT 16 BOARD MEMBER  
(VOTE FOR TWO OR FEWER)

- KENDRA BROWNING
- TREVA BROYLES



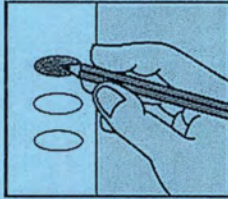


OFFICIAL GENERAL CITY/SCHOOL ELECTION BALLOT

LINN COUNTY

STATE OF KANSAS

NOVEMBER 2, 2021



INSTRUCTIONS TO VOTER

If you tear, deface, or make a mistake and wrongfully mark a ballot, you must return it to the election board and receive a new ballot.

To vote for a person, darken the oval to the left of the person's name.

To vote for a person whose name is not printed on the ballot, write the person's name in the blank space and darken the oval to the left.

CITY OFFICES

FOR MAYOR  
LINN VALLEY  
(VOTE FOR ONE)

CINDY C SMITH

FOR CITY COUNCIL MEMBERS  
LINN VALLEY  
(VOTE FOR TWO OR FEWER)

LEWIS DONELSON

MICHAEL HEMPHILL

SCHOOL DISTRICT OFFICES

FOR SCHOOL BOARD MEMBER  
UNIFIED SCHOOL DISTRICT 362  
POSITION 4  
(VOTE FOR ONE)

EXTENSION DISTRICT OFFICES

FOR MARAIS DES CYGNES EXTENSION  
DISTRICT 16 BOARD MEMBER  
(VOTE FOR TWO OR FEWER)

TREVA BROYLES

KENDRA BROWNING

