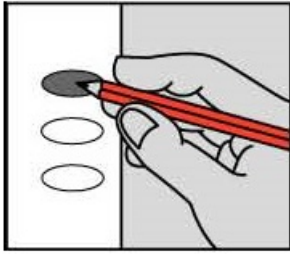


# OFFICIAL GENERAL ELECTION BALLOT

LINN COUNTY

STATE OF KANSAS

November 3, 2020



**INSTRUCTIONS TO VOTER**

If you tear, deface, or make a mistake and wrongfully mark a ballot, you must return it to the election board and receive a new ballot.

To vote for a person, darken the oval to the left of the person's name.

To vote for a person whose name is not printed on the ballot, write the person's name in the blank space and darken the oval to the left.

**STATE OFFICES**

**COUNTY OFFICES**

**FOR STATE SENATOR  
12TH DISTRICT**  
Vote For One

**FOR COUNTY ATTORNEY**  
Vote For One

- MIKE BRUNER**  
Humboldt Democratic
- CARYN TYSON**  
Parker Republican
- \_\_\_\_\_

- BURTON M. HARDING**  
Mound City Republican
- \_\_\_\_\_

**FOR STATE REPRESENTATIVE  
4TH DISTRICT**  
Vote For One

**FOR COUNTY SHERIFF**  
Vote For One

- BILL MEYER**  
Fort Scott Democratic
- TREVOR JACOBS**  
Fort Scott Republican
- \_\_\_\_\_

- KEVIN J. FRIEND**  
Pleasanton Republican
- LEROY MCCONICO**  
Parker Democratic
- \_\_\_\_\_

**NATIONAL OFFICES**

**FOR PRESIDENTIAL ELECTORS  
FOR PRESIDENT AND VICE PRESIDENT**  
Vote For One Pair

**TOWNSHIP OFFICES**

- JORGENSEN AND COHEN**  
Libertarian
- TRUMP AND PENCE**  
Republican
- BIDEN AND HARRIS**  
Democratic
- \_\_\_\_\_

**FOR TOWNSHIP TRUSTEE  
VALLEY**  
Vote For One

**COUNTY OFFICES**

**FOR COUNTY COMMISSIONER  
DISTRICT 2**  
Vote For One

**FOR TOWNSHIP TRESURER  
VALLEY**  
Vote For One

- DANIEL W. MCCULLOUGH JR.**  
Pleasanton Republican
- \_\_\_\_\_

**FOR UNITED STATES SENATE**  
Vote For One

- JASON BUCKLEY**  
Overland Park Libertarian
- ROGER MARSHALL**  
Great Bend Republican
- BARBARA BOLLIER**  
Mission Hills Democratic
- \_\_\_\_\_

**FOR COUNTY CLERK**  
Vote For One

**FOR TOWNSHIP TRESURER  
VALLEY**  
Vote For One

- DAVID L. LAMB**  
Mound City Republican
- \_\_\_\_\_

**FOR COUNTY TREASURER**  
Vote For One

**FOR UNITED STATES REPRESENTATIVE  
2ND DISTRICT**  
Vote For One

- JANET KLEWENO**  
Pleasanton Republican
- \_\_\_\_\_

- ROBERT GARRARD**  
Edgerton Libertarian
- JAKE LATURNER**  
Topeka Republican
- MICHELLE DE LA ISLA**  
Topeka Democratic
- \_\_\_\_\_

**FOR COUNTY REGISTER OF DEEDS**  
Vote For One

- KRISTY S. SCHMITZ**  
Parker Republican
- \_\_\_\_\_

**VOTE BOTH SIDES**

SAMPLE

VAT

Typ:01 Seq:0014 Spl:01

**SUPREME COURT JUSTICE**

To vote for a Justice of the Supreme Court being retained in office, darken the oval to the left of the word "Yes". To vote against a Justice of the Supreme Court being retained in office, darken the oval to the left of the word "No".

Shall ERIC S. ROSEN, Topeka, Position 4, be retained in office?

YES

NO

**COURT OF APPEALS JUDGE**

To vote for a Judge of the Court of Appeals being retained in office, darken the oval to the left of the word "Yes". To vote against a Judge of the Court of Appeals being retained in office, darken the oval to the left of the word "No".

Shall SARAH E. WARNER, Lenexa, Position 4, be retained in office?

YES

NO

Shall DAVID E. BRUNS, Olathe, Position 6, be retained in office?

YES

NO

Shall G. GORDON ATCHESON, Overland Park, Position 8, be retained in office?

YES

NO

Shall KAREN M. ARNOLD-BURGER, Overland Park, Position 9, be retained in office?

YES

NO

Shall KATHRYN GARDNER, Topeka, Position 14, be retained in office?

YES

NO

**DISTRICT COURT JUDGE**

To vote for a Judge of the District Court being retained in office, darken the oval to the left of the word "Yes". To vote against a Judge of the District Court being retained in office, darken the oval to the left of the word "No".

Shall TERRI L JOHNSON, Pleasanton, District 6, Division 2, be retained in office?

YES

NO

Shall MARK A. WARD, Fort Scott, District 6, Division 3, be retained in office?

YES

NO

Shall STEVEN C. MONTGOMERY, Spring Hill, District 6, Division 4, be retained in office?

YES

NO

**VOTE BOTH SIDES**

SAMPLE