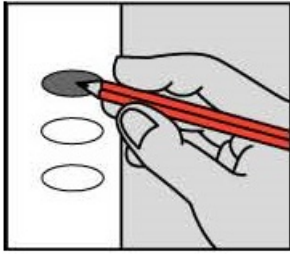


OFFICIAL GENERAL ELECTION BALLOT

LINN COUNTY

STATE OF KANSAS

November 3, 2020



INSTRUCTIONS TO VOTER

If you tear, deface, or make a mistake and wrongfully mark a ballot, you must return it to the election board and receive a new ballot.

To vote for a person, darken the oval to the left of the person's name.

To vote for a person whose name is not printed on the ballot, write the person's name in the blank space and darken the oval to the left.

STATE OFFICES

COUNTY OFFICES

**FOR STATE SENATOR
12TH DISTRICT**
Vote For One

FOR COUNTY ATTORNEY
Vote For One

- MIKE BRUNER**
Humboldt Democratic
- CARYN TYSON**
Parker Republican
- _____

- BURTON M. HARDING**
Mound City Republican
- _____

**FOR STATE REPRESENTATIVE
4TH DISTRICT**
Vote For One

FOR COUNTY SHERIFF
Vote For One

- TREVOR JACOBS**
Fort Scott Republican
- BILL MEYER**
Fort Scott Democratic
- _____

- KEVIN J. FRIEND**
Pleasanton Republican
- LEROY MCCONICO**
Parker Democratic
- _____

NATIONAL OFFICES

**FOR PRESIDENTIAL ELECTORS
FOR PRESIDENT AND VICE PRESIDENT**
Vote For One Pair

TOWNSHIP OFFICES

- JORGENSEN AND COHEN**
Libertarian
- TRUMP AND PENCE**
Republican
- BIDEN AND HARRIS**
Democratic
- _____

COUNTY OFFICES

**FOR TOWNSHIP TRUSTEE
POTOSI**
Vote For One

**FOR COUNTY COMMISSIONER
DISTRICT 2**
Vote For One

- JOYCE M. HAZELBAKER**
Republican
- _____

- DANIEL W. MCCULLOUGH JR.**
Pleasanton Republican
- _____

FOR UNITED STATES SENATE
Vote For One

**FOR TOWNSHIP TREASURER
POTOSI**
Vote For One

- JASON BUCKLEY**
Overland Park Libertarian
- ROGER MARSHALL**
Great Bend Republican
- BARBARA BOLLIER**
Mission Hills Democratic
- _____

FOR COUNTY CLERK
Vote For One

- STEVE ELLIS**
Republican
- _____

- DAVID L. LAMB**
Mound City Republican
- _____

FOR COUNTY TREASURER
Vote For One

**FOR UNITED STATES REPRESENTATIVE
2ND DISTRICT**
Vote For One

- JANET KLEWENO**
Pleasanton Republican
- _____

- ROBERT GARRARD**
Edgerton Libertarian
- JAKE LATURNER**
Topeka Republican
- MICHELLE DE LA ISLA**
Topeka Democratic
- _____

FOR COUNTY REGISTER OF DEEDS
Vote For One

- KRISTY S. SCHMITZ**
Parker Republican
- _____

VOTE BOTH SIDES

SAMPLE

SUPREME COURT JUSTICE

To vote for a Justice of the Supreme Court being retained in office, darken the oval to the left of the word "Yes". To vote against a Justice of the Supreme Court being retained in office, darken the oval to the left of the word "No".

Shall ERIC S. ROSEN, Topeka, Position 4, be retained in office?

YES

NO

COURT OF APPEALS JUDGE

To vote for a Judge of the Court of Appeals being retained in office, darken the oval to the left of the word "Yes". To vote against a Judge of the Court of Appeals being retained in office, darken the oval to the left of the word "No".

Shall SARAH E. WARNER, Lenexa, Position 4, be retained in office?

YES

NO

Shall DAVID E. BRUNS, Olathe, Position 6, be retained in office?

YES

NO

Shall G. GORDON ATCHESON, Overland Park, Position 8, be retained in office?

YES

NO

Shall KAREN M. ARNOLD-BURGER, Overland Park, Position 9, be retained in office?

YES

NO

Shall KATHRYN GARDNER, Topeka, Position 14, be retained in office?

YES

NO

DISTRICT COURT JUDGE

To vote for a Judge of the District Court being retained in office, darken the oval to the left of the word "Yes". To vote against a Judge of the District Court being retained in office, darken the oval to the left of the word "No".

Shall TERRI L JOHNSON, Pleasanton, District 6, Division 2, be retained in office?

YES

NO

Shall MARK A. WARD, Fort Scott, District 6, Division 3, be retained in office?

YES

NO

Shall STEVEN C. MONTGOMERY, Spring Hill, District 6, Division 4, be retained in office?

YES

NO

VOTE BOTH SIDES

SAMPLE