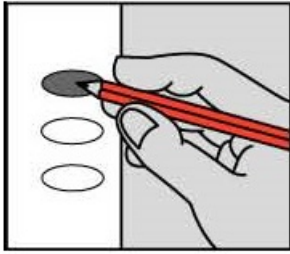


# OFFICIAL GENERAL ELECTION BALLOT

LINN COUNTY

STATE OF KANSAS

November 3, 2020



**INSTRUCTIONS TO VOTER**

If you tear, deface, or make a mistake and wrongfully mark a ballot, you must return it to the election board and receive a new ballot.

To vote for a person, darken the oval to the left of the person's name.

To vote for a person whose name is not printed on the ballot, write the person's name in the blank space and darken the oval to the left.

**STATE OFFICES**

**COUNTY OFFICES**

**FOR STATE SENATOR  
12TH DISTRICT**  
Vote For One

**FOR COUNTY ATTORNEY**  
Vote For One

- MIKE BRUNER**  
Humboldt Democratic
- CARYN TYSON**  
Parker Republican
- \_\_\_\_\_

- BURTON M. HARDING**  
Mound City Republican
- \_\_\_\_\_

**FOR STATE REPRESENTATIVE  
5TH DISTRICT**  
Vote For One

**FOR COUNTY SHERIFF**  
Vote For One

- MARK SAMSEL**  
Wellsville Republican
- ROGER SIMS**  
Parker Democratic
- \_\_\_\_\_

- LEROY MCCONICO**  
Parker Democratic
- KEVIN J. FRIEND**  
Pleasanton Republican
- \_\_\_\_\_

**NATIONAL OFFICES**

**FOR PRESIDENTIAL ELECTORS  
FOR PRESIDENT AND VICE PRESIDENT**  
Vote For One Pair

**TOWNSHIP OFFICES**

- JORGENSEN AND COHEN**  
Libertarian
- TRUMP AND PENCE**  
Republican
- BIDEN AND HARRIS**  
Democratic
- \_\_\_\_\_

**FOR TOWNSHIP TRUSTEE  
CENTERVILLE**  
Vote For One

**COUNTY OFFICES**

**FOR COUNTY COMMISSIONER  
DISTRICT 3**  
Vote For One

- DAVID R. EASTWOOD**  
Republican
- \_\_\_\_\_

- CHARLENE SIMS**  
Parker Democratic
- JAMES C. JOHNSON**  
Mound City Republican
- \_\_\_\_\_

**FOR UNITED STATES SENATE**  
Vote For One

**FOR TOWNSHIP TREASURER  
CENTERVILLE**  
Vote For One

- JASON BUCKLEY**  
Overland Park Libertarian
- ROGER MARSHALL**  
Great Bend Republican
- BARBARA BOLLIER**  
Mission Hills Democratic
- \_\_\_\_\_

- BRENDA CONNER**  
Republican
- \_\_\_\_\_

**FOR COUNTY CLERK**  
Vote For One

- DAVID L. LAMB**  
Mound City Republican
- \_\_\_\_\_

**FOR UNITED STATES REPRESENTATIVE  
2ND DISTRICT**  
Vote For One

**FOR COUNTY TREASURER**  
Vote For One

- ROBERT GARRARD**  
Edgerton Libertarian
- JAKE LATURNER**  
Topeka Republican
- MICHELLE DE LA ISLA**  
Topeka Democratic
- \_\_\_\_\_

- JANET KLEWENO**  
Pleasanton Republican
- \_\_\_\_\_

**FOR COUNTY REGISTER OF DEEDS**  
Vote For One

- KRISTY S. SCHMITZ**  
Parker Republican
- \_\_\_\_\_

**VOTE BOTH SIDES**

SAMPLE

**SUPREME COURT JUSTICE**

To vote for a Justice of the Supreme Court being retained in office, darken the oval to the left of the word "Yes". To vote against a Justice of the Supreme Court being retained in office, darken the oval to the left of the word "No".

Shall ERIC S. ROSEN, Topeka, Position 4, be retained in office?

- YES
- NO

**COURT OF APPEALS JUDGE**

To vote for a Judge of the Court of Appeals being retained in office, darken the oval to the left of the word "Yes". To vote against a Judge of the Court of Appeals being retained in office, darken the oval to the left of the word "No".

Shall SARAH E. WARNER, Lenexa, Position 4, be retained in office?

- YES
- NO

Shall DAVID E. BRUNS, Olathe, Position 6, be retained in office?

- YES
- NO

Shall G. GORDON ATCHESON, Overland Park, Position 8, be retained in office?

- YES
- NO

Shall KAREN M. ARNOLD-BURGER, Overland Park, Position 9, be retained in office?

- YES
- NO

Shall KATHRYN GARDNER, Topeka, Position 14, be retained in office?

- YES
- NO

**DISTRICT COURT JUDGE**

To vote for a Judge of the District Court being retained in office, darken the oval to the left of the word "Yes". To vote against a Judge of the District Court being retained in office, darken the oval to the left of the word "No".

Shall TERRI L JOHNSON, Pleasanton, District 6, Division 2, be retained in office?

- YES
- NO

Shall MARK A. WARD, Fort Scott, District 6, Division 3, be retained in office?

- YES
- NO

Shall STEVEN C. MONTGOMERY, Spring Hill, District 6, Division 4, be retained in office?

- YES
- NO

**VOTE BOTH SIDES**

SAMPLE