

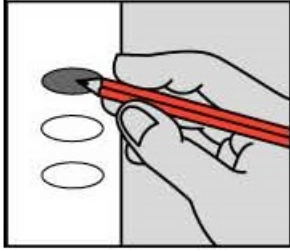
OFFICIAL BALLOT

GENERAL ELECTION

LINN COUNTY

STATE OF KANSAS

November 6, 2018



INSTRUCTIONS TO VOTER

If you tear, deface, or make a mistake and wrongfully mark a ballot, you must return it to the election board and receive a new ballot.

To vote for a person, darken the oval to the left of the person's name.

To vote for a person whose name is not printed on the ballot, write the person's name in the blank space and darken the oval to the left.

NATIONAL OFFICES

FOR UNITED STATES REPRESENTATIVE 2ND DISTRICT Vote for One

- KELLY STANDLEY St. Paul Libertarian
STEVE WATKINS Topeka Republican
PAUL DAVIS Lawrence Democratic

STATE OFFICES

FOR GOVERNOR AND LIEUTENANT GOVERNOR Vote for One Pair

- RICK KLOOS Berryton NATHANIEL KLOOS Berryton Independent
KRIS KOBACH Lecompton WINK HARTMAN Rose Hill Republican
GREG ORMAN Fairway JOHN DOLL Garden City Independent
JEFF CALDWELL Leawood MARY GERLT Kansas City Libertarian
LAURA KELLY Topeka LYNN ROGERS Wichita Democratic

STATE OFFICES

FOR SECRETARY OF STATE Vote for One

- BRIAN "BAM" MCCLENDON Lawrence Democratic
SCOTT SCHWAB Olathe Republican
ROB HODGKINSON Stilwell Libertarian

FOR ATTORNEY GENERAL Vote for One

- SARAH G. SWAIN Lawrence Democratic
DEREK SCHMIDT Independence Republican

FOR STATE TREASURER Vote for One

- JAKE LATURNER Topeka Republican
MARC FRANCISCO Lawrence Democratic

FOR COMMISSIONER OF INSURANCE Vote for One

- VICKI SCHMIDT Topeka Republican
NATHANIEL MCLAUGHLIN Kansas City Democratic

FOR STATE REPRESENTATIVE 4TH DISTRICT Vote for One

- LAWRENCE FORBACH Mound City Democratic
TREVOR JACOBS Fort Scott Republican

STATE OFFICES

FOR STATE BOARD OF EDUCATION MEMBER 9TH DISTRICT Vote for One

- JIM PORTER Fredonia Republican

TOWNSHIP OFFICES

FOR TOWNSHIP CLERK BLUE MOUND Vote for One

- KELLEY JACKSON Republican

VOTE BOTH SIDES

SAMPLE BALLOT DO NOT REMOVE

LINN COUNTY	STATE OF KANSAS	November 6, 2018
<b>COURT OF APPEALS JUDGE</b>		<b>DISTRICT COURT JUDGE</b>
To vote for a Judge of the Court of Appeals being retained in office, darken the oval to the left of the word "YES". To vote against a Judge of the Court of Appeals being retained in office, darken the oval to the left of the word "NO".	To vote for a Judge of the District Court being retained in office, darken the oval to the left of the word "YES". To vote against a Judge of the District Court being retained in office, darken the oval to the left of the word "NO".	
Shall Stephen D. Hill, Topeka, Position 1, be retained in office?  <input type="radio"/> YES <input type="radio"/> NO	Shall Amy L. Harth, Paola, District 6, Division 1, be retained in office?  <input type="radio"/> YES <input type="radio"/> NO	
Shall Kim R. Schroeder, Hugoton, Position 5, be retained in office?  <input type="radio"/> YES <input type="radio"/> NO	<b>QUESTIONS SUBMITTED</b>  To vote in favor of any question submitted upon this ballot, darken the oval to the left of the word "YES"; to vote against it, darken the oval to the left of the word "NO".	
Shall Henry W. Green, Jr., Leavenworth, Position 7, be retained in office?  <input type="radio"/> YES <input type="radio"/> NO	<b>QUESTION NUMBER ONE</b>  Shall the following be adopted?  Shall Linn County, Kansas, be authorized to: (1) impose a one percent (1%) retailers' sales tax (the "Sales Tax") for the purpose of financing a portion of the costs (a) to construct, furnish and equip a law enforcement and judicial center and a government administration center, renovate other county offices and buildings and make all other related improvements (collectively the "Project"), and (b) of operating and maintaining the Project, with collection of such Sales Tax to commence on April 1, 2019, or as soon thereafter as permitted by law, and three-quarters of such Sales Tax (0.75%) to expire upon the payment of all Project costs (including the retirement of any bonds issued and payable from such Sales Tax); and (2) issue sales tax/general obligation bonds (the "Bonds") to pay a portion of the total estimated \$20,390,150 costs of the Project, and related interest and Bond issuance costs, with an expected \$3,100,000 portion of such Project costs to be paid from available funds of the County; all pursuant to the authority of K.S.A. 12-187 et seq., as amended?	
Shall Anthony J. Powell, Wichita, Position 10, be retained in office?  <input type="radio"/> YES <input type="radio"/> NO		
Shall Tom Malone, Wichita, Position 11, be retained in office?  <input type="radio"/> YES <input type="radio"/> NO		
Shall Michael B. Buser, Overland Park, Position 12, be retained in office?  <input type="radio"/> YES <input type="radio"/> NO		
Shall Melissa Taylor Standridge, Leawood, Position 13, be retained in office?  <input type="radio"/> YES <input type="radio"/> NO		
	<div data-bbox="1171 2203 1536 2314" style="border: 1px solid black; padding: 5px; text-align: center;"> <b>VOTE BOTH SIDES</b> </div> <div data-bbox="1119 2494 1588 2619" style="color: red; font-weight: bold; text-align: center;"> <b>SAMPLE BALLOT DO NOT REMOVE</b> </div>	
BMT	Typ:01 Seq:0001 Spl:01	

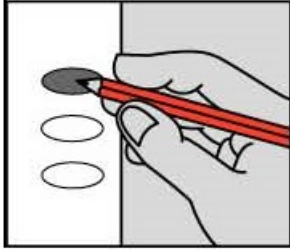
OFFICIAL BALLOT

GENERAL ELECTION

LINN COUNTY

STATE OF KANSAS

November 6, 2018



INSTRUCTIONS TO VOTER

If you tear, deface, or make a mistake and wrongfully mark a ballot, you must return it to the election board and receive a new ballot.

To vote for a person, darken the oval to the left of the person's name.

To vote for a person whose name is not printed on the ballot, write the person's name in the blank space and darken the oval to the left.

STATE OFFICES

STATE OFFICES

FOR SECRETARY OF STATE
Vote for One

FOR STATE BOARD OF EDUCATION
MEMBER
9TH DISTRICT
Vote for One

- BRIAN "BAM" MCCLENDON
Lawrence Democratic
SCOTT SCHWAB
Olathe Republican
ROB HODGKINSON
Stilwell Libertarian

- JIM PORTER
Fredonia Republican

TOWNSHIP OFFICES

FOR TOWNSHIP CLERK
CENTERVILLE
Vote for One

- WANDA WHITCOMB
Republican

NATIONAL OFFICES

FOR ATTORNEY GENERAL
Vote for One

FOR UNITED STATES REPRESENTATIVE
2ND DISTRICT
Vote for One

- SARAH G. SWAIN
Lawrence Democratic
DEREK SCHMIDT
Independence Republican

- KELLY STANDLEY
St. Paul Libertarian
STEVE WATKINS
Topeka Republican
PAUL DAVIS
Lawrence Democratic

FOR STATE TREASURER
Vote for One

- JAKE LATURNER
Topeka Republican
MARC FRANCISCO
Lawrence Democratic

STATE OFFICES

FOR GOVERNOR AND LIEUTENANT
GOVERNOR
Vote for One Pair

FOR COMMISSIONER OF INSURANCE
Vote for One

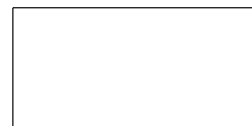
- RICK KLOOS
Berryton Independent
NATHANIEL KLOOS
Berryton
KRIS KOBACH
Lecompton Republican
WINK HARTMAN
Rose Hill
GREG ORMAN
Fairway Independent
JOHN DOLL
Garden City
JEFF CALDWELL
Leawood Libertarian
MARY GERLT
Kansas City
LAURA KELLY
Topeka Democratic
LYNN ROGERS
Wichita

- VICKI SCHMIDT
Topeka Republican
NATHANIEL MCLAUGHLIN
Kansas City Democratic

FOR STATE REPRESENTATIVE
5TH DISTRICT
Vote for One

- LASSEY MURPHY
Lane Democratic
MARK SAMSEL
Wellsville Republican

VOTE BOTH SIDES



SAMPLE BALLOT
DO NOT REMOVE

LINN COUNTY	STATE OF KANSAS	November 6, 2018
<b>COURT OF APPEALS JUDGE</b>	<b>DISTRICT COURT JUDGE</b>	
To vote for a Judge of the Court of Appeals being retained in office, darken the oval to the left of the word "YES". To vote against a Judge of the Court of Appeals being retained in office, darken the oval to the left of the word "NO".	To vote for a Judge of the District Court being retained in office, darken the oval to the left of the word "YES". To vote against a Judge of the District Court being retained in office, darken the oval to the left of the word "NO".	
Shall Stephen D. Hill, Topeka, Position 1, be retained in office?  <input type="radio"/> YES <input type="radio"/> NO	Shall Amy L. Harth, Paola, District 6, Division 1, be retained in office?  <input type="radio"/> YES <input type="radio"/> NO	
Shall Kim R. Schroeder, Hugoton, Position 5, be retained in office?  <input type="radio"/> YES <input type="radio"/> NO	<b>QUESTIONS SUBMITTED</b>	
	To vote in favor of any question submitted upon this ballot, darken the oval to the left of the word "YES"; to vote against it, darken the oval to the left of the word "NO".	
Shall Henry W. Green, Jr., Leavenworth, Position 7, be retained in office?  <input type="radio"/> YES <input type="radio"/> NO	<b>QUESTION NUMBER ONE</b>	
	Shall the following be adopted?  Shall Linn County, Kansas, be authorized to: (1) impose a one percent (1%) retailers' sales tax (the "Sales Tax") for the purpose of financing a portion of the costs (a) to construct, furnish and equip a law enforcement and judicial center and a government administration center, renovate other county offices and buildings and make all other related improvements (collectively the "Project"), and (b) of operating and maintaining the Project, with collection of such Sales Tax to commence on April 1, 2019, or as soon thereafter as permitted by law, and three-quarters of such Sales Tax (0.75%) to expire upon the payment of all Project costs (including the retirement of any bonds issued and payable from such Sales Tax); and (2) issue sales tax/general obligation bonds (the "Bonds") to pay a portion of the total estimated \$20,390,150 costs of the Project, and related interest and Bond issuance costs, with an expected \$3,100,000 portion of such Project costs to be paid from available funds of the County; all pursuant to the authority of K.S.A. 12-187 et seq., as amended?	
Shall Anthony J. Powell, Wichita, Position 10, be retained in office?  <input type="radio"/> YES <input type="radio"/> NO	<input type="radio"/> YES <input type="radio"/> NO	
Shall Tom Malone, Wichita, Position 11, be retained in office?  <input type="radio"/> YES <input type="radio"/> NO		
Shall Michael B. Buser, Overland Park, Position 12, be retained in office?  <input type="radio"/> YES <input type="radio"/> NO		
Shall Melissa Taylor Standridge, Leawood, Position 13, be retained in office?  <input type="radio"/> YES <input type="radio"/> NO		
		<b>VOTE BOTH SIDES</b>
CET	Typ:01 Seq:0002 Spl:01	<b>SAMPLE BALLOT DO NOT REMOVE</b>

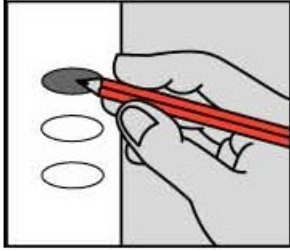
OFFICIAL BALLOT

GENERAL ELECTION

LINN COUNTY

STATE OF KANSAS

November 6, 2018



INSTRUCTIONS TO VOTER

If you tear, deface, or make a mistake and wrongfully mark a ballot, you must return it to the election board and receive a new ballot.

To vote for a person, darken the oval to the left of the person's name.

To vote for a person whose name is not printed on the ballot, write the person's name in the blank space and darken the oval to the left.

NATIONAL OFFICES

FOR UNITED STATES REPRESENTATIVE 2ND DISTRICT Vote for One

- KELLY STANDLEY St. Paul Libertarian
STEVE WATKINS Topeka Republican
PAUL DAVIS Lawrence Democratic

STATE OFFICES

FOR GOVERNOR AND LIEUTENANT GOVERNOR Vote for One Pair

- RICK KLOOS Berryton, NATHANIEL KLOOS Berryton Independent
KRIS KOBACH Lecompton, WINK HARTMAN Rose Hill Republican
GREG ORMAN Fairway, JOHN DOLL Garden City Independent
JEFF CALDWELL Leawood, MARY GERLT Kansas City Libertarian
LAURA KELLY Topeka, LYNN ROGERS Wichita Democratic

STATE OFFICES

FOR SECRETARY OF STATE Vote for One

- BRIAN "BAM" MCCLENDON Lawrence Democratic
SCOTT SCHWAB Olathe Republican
ROB HODGKINSON Stilwell Libertarian

FOR ATTORNEY GENERAL Vote for One

- SARAH G. SWAIN Lawrence Democratic
DEREK SCHMIDT Independence Republican

FOR STATE TREASURER Vote for One

- JAKE LATURNER Topeka Republican
MARC FRANCISCO Lawrence Democratic

FOR COMMISSIONER OF INSURANCE Vote for One

- VICKI SCHMIDT Topeka Republican
NATHANIEL MCLAUGHLIN Kansas City Democratic

FOR STATE REPRESENTATIVE 5TH DISTRICT Vote for One

- MARK SAMSEL Wellsville Republican
LASSEY MURPHY Lane Democratic

STATE OFFICES

FOR STATE BOARD OF EDUCATION MEMBER 9TH DISTRICT Vote for One

- JIM PORTER Fredonia Republican

TOWNSHIP OFFICES

FOR TOWNSHIP CLERK LIBERTY Vote for One

- CHARLA HOLT Democratic

VOTE BOTH SIDES

SAMPLE BALLOT DO NOT REMOVE

LINN COUNTY	STATE OF KANSAS	November 6, 2018
<b>COURT OF APPEALS JUDGE</b>		<b>DISTRICT COURT JUDGE</b>
To vote for a Judge of the Court of Appeals being retained in office, darken the oval to the left of the word "YES". To vote against a Judge of the Court of Appeals being retained in office, darken the oval to the left of the word "NO".	To vote for a Judge of the District Court being retained in office, darken the oval to the left of the word "YES". To vote against a Judge of the District Court being retained in office, darken the oval to the left of the word "NO".	
Shall Stephen D. Hill, Topeka, Position 1, be retained in office?  <input type="radio"/> YES <input type="radio"/> NO	Shall Amy L. Harth, Paola, District 6, Division 1, be retained in office?  <input type="radio"/> YES <input type="radio"/> NO	
Shall Kim R. Schroeder, Hugoton, Position 5, be retained in office?  <input type="radio"/> YES <input type="radio"/> NO	<b>QUESTIONS SUBMITTED</b>  To vote in favor of any question submitted upon this ballot, darken the oval to the left of the word "YES"; to vote against it, darken the oval to the left of the word "NO".	
Shall Henry W. Green, Jr., Leavenworth, Position 7, be retained in office?  <input type="radio"/> YES <input type="radio"/> NO	<b>QUESTION NUMBER ONE</b>  Shall the following be adopted?  Shall Linn County, Kansas, be authorized to: (1) impose a one percent (1%) retailers' sales tax (the "Sales Tax") for the purpose of financing a portion of the costs (a) to construct, furnish and equip a law enforcement and judicial center and a government administration center, renovate other county offices and buildings and make all other related improvements (collectively the "Project"), and (b) of operating and maintaining the Project, with collection of such Sales Tax to commence on April 1, 2019, or as soon thereafter as permitted by law, and three-quarters of such Sales Tax (0.75%) to expire upon the payment of all Project costs (including the retirement of any bonds issued and payable from such Sales Tax); and (2) issue sales tax/general obligation bonds (the "Bonds") to pay a portion of the total estimated \$20,390,150 costs of the Project, and related interest and Bond issuance costs, with an expected \$3,100,000 portion of such Project costs to be paid from available funds of the County; all pursuant to the authority of K.S.A. 12-187 et seq., as amended?	
Shall Anthony J. Powell, Wichita, Position 10, be retained in office?  <input type="radio"/> YES <input type="radio"/> NO		
Shall Tom Malone, Wichita, Position 11, be retained in office?  <input type="radio"/> YES <input type="radio"/> NO		
Shall Michael B. Buser, Overland Park, Position 12, be retained in office?  <input type="radio"/> YES <input type="radio"/> NO		
Shall Melissa Taylor Standridge, Leawood, Position 13, be retained in office?  <input type="radio"/> YES <input type="radio"/> NO		
	<div data-bbox="1171 2203 1536 2314" style="border: 1px solid black; padding: 5px; display: inline-block;"> <b>VOTE BOTH SIDES</b> </div>  <div data-bbox="1119 2494 1588 2619" style="color: red; font-weight: bold; font-size: 1.2em;"> <b>SAMPLE BALLOT DO NOT REMOVE</b> </div>	
LBT	Typ:01 Seq:0003 Spl:01	



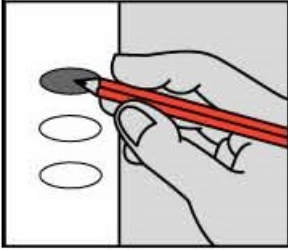
OFFICIAL BALLOT

GENERAL ELECTION

LINN COUNTY

STATE OF KANSAS

November 6, 2018



INSTRUCTIONS TO VOTER

If you tear, deface, or make a mistake and wrongfully mark a ballot, you must return it to the election board and receive a new ballot.

To vote for a person, darken the oval to the left of the person's name.

To vote for a person whose name is not printed on the ballot, write the person's name in the blank space and darken the oval to the left.

NATIONAL OFFICES

FOR UNITED STATES REPRESENTATIVE 2ND DISTRICT Vote for One

- KELLY STANDLEY St. Paul Libertarian
STEVE WATKINS Topeka Republican
PAUL DAVIS Lawrence Democratic

STATE OFFICES

FOR GOVERNOR AND LIEUTENANT GOVERNOR Vote for One Pair

- RICK KLOOS Berryton, NATHANIEL KLOOS Berryton Independent
KRIS KOBACH Lecompton, WINK HARTMAN Rose Hill Republican
GREG ORMAN Fairway, JOHN DOLL Garden City Independent
JEFF CALDWELL Leawood, MARY GERLT Kansas City Libertarian
LAURA KELLY Topeka, LYNN ROGERS Wichita Democratic

STATE OFFICES

FOR SECRETARY OF STATE Vote for One

- BRIAN "BAM" MCCLENDON Lawrence Democratic
SCOTT SCHWAB Olathe Republican
ROB HODGKINSON Stilwell Libertarian

FOR ATTORNEY GENERAL Vote for One

- SARAH G. SWAIN Lawrence Democratic
DEREK SCHMIDT Independence Republican

FOR STATE TREASURER Vote for One

- JAKE LATURNER Topeka Republican
MARC FRANCISCO Lawrence Democratic

FOR COMMISSIONER OF INSURANCE Vote for One

- VICKI SCHMIDT Topeka Republican
NATHANIEL MCLAUGHLIN Kansas City Democratic

FOR STATE REPRESENTATIVE 4TH DISTRICT Vote for One

- TREVOR JACOBS Fort Scott Republican
LAWRENCE FORBACH Mound City Democratic

STATE OFFICES

FOR STATE BOARD OF EDUCATION MEMBER 9TH DISTRICT Vote for One

- JIM PORTER Fredonia Republican

COUNTY OFFICES

FOR COUNTY COMMISSIONER DISTRICT 1 Vote for One

- RICK JAMES Republican

TOWNSHIP OFFICES

FOR TOWNSHIP CLERK LINCOLN Vote for One

- JOE JUNIOR TURPEN Democratic

VOTE BOTH SIDES

SAMPLE BALLOT DO NOT REMOVE

LINN COUNTY	STATE OF KANSAS	November 6, 2018
<b>COURT OF APPEALS JUDGE</b>	<b>DISTRICT COURT JUDGE</b>	
<p>To vote for a Judge of the Court of Appeals being retained in office, darken the oval to the left of the word "YES". To vote against a Judge of the Court of Appeals being retained in office, darken the oval to the left of the word "NO".</p>	<p>To vote for a Judge of the District Court being retained in office, darken the oval to the left of the word "YES". To vote against a Judge of the District Court being retained in office, darken the oval to the left of the word "NO".</p>	
<p>Shall Stephen D. Hill, Topeka, Position 1, be retained in office?</p> <p><input type="radio"/> YES</p> <p><input type="radio"/> NO</p>	<p>Shall Amy L. Harth, Paola, District 6, Division 1, be retained in office?</p> <p><input type="radio"/> YES</p> <p><input type="radio"/> NO</p>	
<p>Shall Kim R. Schroeder, Hugoton, Position 5, be retained in office?</p> <p><input type="radio"/> YES</p> <p><input type="radio"/> NO</p>	<p style="text-align: center;"><b>QUESTIONS SUBMITTED</b></p> <p>To vote in favor of any question submitted upon this ballot, darken the oval to the left of the word "YES"; to vote against it, darken the oval to the left of the word "NO".</p>	
<p>Shall Henry W. Green, Jr., Leavenworth, Position 7, be retained in office?</p> <p><input type="radio"/> YES</p> <p><input type="radio"/> NO</p>	<p style="text-align: center;"><b>QUESTION NUMBER ONE</b></p> <p>Shall the following be adopted?</p>	
<p>Shall Anthony J. Powell, Wichita, Position 10, be retained in office?</p> <p><input type="radio"/> YES</p> <p><input type="radio"/> NO</p>	<p>Shall Linn County, Kansas, be authorized to: (1) impose a one percent (1%) retailers' sales tax (the "Sales Tax") for the purpose of financing a portion of the costs (a) to construct, furnish and equip a law enforcement and judicial center and a government administration center, renovate other county offices and buildings and make all other related improvements (collectively the "Project"), and (b) of operating and maintaining the Project, with collection of such Sales Tax to commence on April 1, 2019, or as soon thereafter as permitted by law, and three-quarters of such Sales Tax (0.75%) to expire upon the payment of all Project costs (including the retirement of any bonds issued and payable from such Sales Tax); and (2) issue sales tax/general obligation bonds (the "Bonds") to pay a portion of the total estimated \$20,390,150 costs of the Project, and related interest and Bond issuance costs, with an expected \$3,100,000 portion of such Project costs to be paid from available funds of the County; all pursuant to the authority of K.S.A. 12-187 et seq., as amended?</p>	
<p>Shall Tom Malone, Wichita, Position 11, be retained in office?</p> <p><input type="radio"/> YES</p> <p><input type="radio"/> NO</p>	<p><input type="radio"/> YES</p> <p><input type="radio"/> NO</p>	
<p>Shall Michael B. Buser, Overland Park, Position 12, be retained in office?</p> <p><input type="radio"/> YES</p> <p><input type="radio"/> NO</p>	<p><input type="radio"/> YES</p> <p><input type="radio"/> NO</p>	
<p>Shall Melissa Taylor Standridge, Leawood, Position 13, be retained in office?</p> <p><input type="radio"/> YES</p> <p><input type="radio"/> NO</p>		
		<div data-bbox="1170 2198 1534 2320" style="border: 1px solid black; padding: 5px; display: inline-block;"> <p><b>VOTE BOTH SIDES</b></p> </div>
LVC	Typ:01 Seq:0004 Spl:01	<p><u>SAMPLE BALLOT</u></p> <p><u>DO NOT REMOVE</u></p>



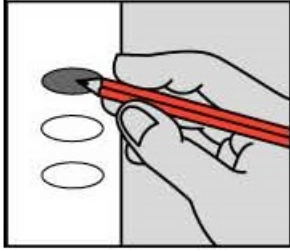
OFFICIAL BALLOT

GENERAL ELECTION

LINN COUNTY

STATE OF KANSAS

November 6, 2018



INSTRUCTIONS TO VOTER

If you tear, deface, or make a mistake and wrongfully mark a ballot, you must return it to the election board and receive a new ballot.

To vote for a person, darken the oval to the left of the person's name.

To vote for a person whose name is not printed on the ballot, write the person's name in the blank space and darken the oval to the left.

NATIONAL OFFICES

FOR UNITED STATES REPRESENTATIVE 2ND DISTRICT Vote for One

- KELLY STANDLEY St. Paul Libertarian
STEVE WATKINS Topeka Republican
PAUL DAVIS Lawrence Democratic

STATE OFFICES

FOR GOVERNOR AND LIEUTENANT GOVERNOR Vote for One Pair

- RICK KLOOS Berryton NATHANIEL KLOOS Berryton Independent
KRIS KOBACH Lecompton WINK HARTMAN Rose Hill Republican
GREG ORMAN Fairway JOHN DOLL Garden City Independent
JEFF CALDWELL Leawood MARY GERLT Kansas City Libertarian
LAURA KELLY Topeka LYNN ROGERS Wichita Democratic

STATE OFFICES

FOR SECRETARY OF STATE Vote for One

- BRIAN "BAM" MCCLENDON Lawrence Democratic
SCOTT SCHWAB Olathe Republican
ROB HODGKINSON Stilwell Libertarian

FOR ATTORNEY GENERAL Vote for One

- SARAH G. SWAIN Lawrence Democratic
DEREK SCHMIDT Independence Republican

FOR STATE TREASURER Vote for One

- JAKE LATURNER Topeka Republican
MARC FRANCISCO Lawrence Democratic

FOR COMMISSIONER OF INSURANCE Vote for One

- VICKI SCHMIDT Topeka Republican
NATHANIEL MCLAUGHLIN Kansas City Democratic

FOR STATE REPRESENTATIVE 4TH DISTRICT Vote for One

- LAWRENCE FORBACH Mound City Democratic
TREVOR JACOBS Fort Scott Republican

STATE OFFICES

FOR STATE BOARD OF EDUCATION MEMBER 9TH DISTRICT Vote for One

- JIM PORTER Fredonia Republican

TOWNSHIP OFFICES

FOR TOWNSHIP CLERK MOUND CITY Vote for One

- LARRY HOLT Democratic

VOTE BOTH SIDES

SAMPLE BALLOT DO NOT REMOVE

LINN COUNTY	STATE OF KANSAS	November 6, 2018
<b>COURT OF APPEALS JUDGE</b>		<b>DISTRICT COURT JUDGE</b>
To vote for a Judge of the Court of Appeals being retained in office, darken the oval to the left of the word "YES". To vote against a Judge of the Court of Appeals being retained in office, darken the oval to the left of the word "NO".	To vote for a Judge of the District Court being retained in office, darken the oval to the left of the word "YES". To vote against a Judge of the District Court being retained in office, darken the oval to the left of the word "NO".	
Shall Stephen D. Hill, Topeka, Position 1, be retained in office?  <input type="radio"/> YES <input type="radio"/> NO	Shall Amy L. Harth, Paola, District 6, Division 1, be retained in office?  <input type="radio"/> YES <input type="radio"/> NO	
Shall Kim R. Schroeder, Hugoton, Position 5, be retained in office?  <input type="radio"/> YES <input type="radio"/> NO	<b>QUESTIONS SUBMITTED</b>  To vote in favor of any question submitted upon this ballot, darken the oval to the left of the word "YES"; to vote against it, darken the oval to the left of the word "NO".	
Shall Henry W. Green, Jr., Leavenworth, Position 7, be retained in office?  <input type="radio"/> YES <input type="radio"/> NO	<b>QUESTION NUMBER ONE</b>  Shall the following be adopted?  Shall Linn County, Kansas, be authorized to: (1) impose a one percent (1%) retailers' sales tax (the "Sales Tax") for the purpose of financing a portion of the costs (a) to construct, furnish and equip a law enforcement and judicial center and a government administration center, renovate other county offices and buildings and make all other related improvements (collectively the "Project"), and (b) of operating and maintaining the Project, with collection of such Sales Tax to commence on April 1, 2019, or as soon thereafter as permitted by law, and three-quarters of such Sales Tax (0.75%) to expire upon the payment of all Project costs (including the retirement of any bonds issued and payable from such Sales Tax); and (2) issue sales tax/general obligation bonds (the "Bonds") to pay a portion of the total estimated \$20,390,150 costs of the Project, and related interest and Bond issuance costs, with an expected \$3,100,000 portion of such Project costs to be paid from available funds of the County; all pursuant to the authority of K.S.A. 12-187 et seq., as amended?	
Shall Anthony J. Powell, Wichita, Position 10, be retained in office?  <input type="radio"/> YES <input type="radio"/> NO		
Shall Tom Malone, Wichita, Position 11, be retained in office?  <input type="radio"/> YES <input type="radio"/> NO		
Shall Michael B. Buser, Overland Park, Position 12, be retained in office?  <input type="radio"/> YES <input type="radio"/> NO		
Shall Melissa Taylor Standridge, Leawood, Position 13, be retained in office?  <input type="radio"/> YES <input type="radio"/> NO		
	<div data-bbox="1171 2203 1536 2314" style="border: 1px solid black; padding: 5px; display: inline-block;"> <b>VOTE BOTH SIDES</b> </div>  <div data-bbox="1119 2494 1588 2619" style="border: 2px solid red; padding: 5px; display: inline-block; color: red;"> <b>SAMPLE BALLOT DO NOT REMOVE</b> </div>	
MCT	Typ:01 Seq:0005 Spl:01	

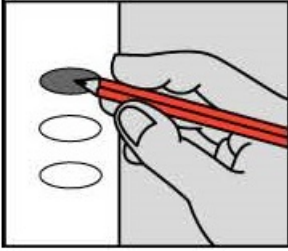
OFFICIAL BALLOT

GENERAL ELECTION

LINN COUNTY

STATE OF KANSAS

November 6, 2018



INSTRUCTIONS TO VOTER

If you tear, deface, or make a mistake and wrongfully mark a ballot, you must return it to the election board and receive a new ballot.

To vote for a person, darken the oval to the left of the person's name.

To vote for a person whose name is not printed on the ballot, write the person's name in the blank space and darken the oval to the left.

NATIONAL OFFICES

FOR UNITED STATES REPRESENTATIVE 2ND DISTRICT Vote for One

- KELLY STANDLEY St. Paul Libertarian
STEVE WATKINS Topeka Republican
PAUL DAVIS Lawrence Democratic

STATE OFFICES

FOR GOVERNOR AND LIEUTENANT GOVERNOR Vote for One Pair

- RICK KLOOS Berryton Independent
NATHANIEL KLOOS Berryton Independent
KRIS KOBACH Lecompton Republican
WINK HARTMAN Rose Hill Republican
GREG ORMAN Fairway Independent
JOHN DOLL Garden City Independent
JEFF CALDWELL Leawood Libertarian
MARY GERLT Kansas City Libertarian
LAURA KELLY Topeka Democratic
LYNN ROGERS Wichita Democratic

STATE OFFICES

FOR SECRETARY OF STATE Vote for One

- BRIAN "BAM" MCCLENDON Lawrence Democratic
SCOTT SCHWAB Olathe Republican
ROB HODGKINSON Stilwell Libertarian

FOR ATTORNEY GENERAL Vote for One

- SARAH G. SWAIN Lawrence Democratic
DEREK SCHMIDT Independence Republican

FOR STATE TREASURER Vote for One

- JAKE LATURNER Topeka Republican
MARC FRANCISCO Lawrence Democratic

FOR COMMISSIONER OF INSURANCE Vote for One

- VICKI SCHMIDT Topeka Republican
NATHANIEL MCLAUGHLIN Kansas City Democratic

FOR STATE REPRESENTATIVE 4TH DISTRICT Vote for One

- TREVOR JACOBS Fort Scott Republican
LAWRENCE FORBACH Mound City Democratic

STATE OFFICES

FOR STATE BOARD OF EDUCATION MEMBER 9TH DISTRICT Vote for One

- JIM PORTER Fredonia Republican

COUNTY OFFICES

FOR COUNTY COMMISSIONER DISTRICT 1 Vote for One

- RICK JAMES Republican

TOWNSHIP OFFICES

FOR TOWNSHIP CLERK LINCOLN Vote for One

- JOE JUNIOR TURPEN Democratic

VOTE BOTH SIDES

SAMPLE BALLOT DO NOT REMOVE

LINN COUNTY	STATE OF KANSAS	November 6, 2018
<b>COURT OF APPEALS JUDGE</b>		<b>DISTRICT COURT JUDGE</b>
To vote for a Judge of the Court of Appeals being retained in office, darken the oval to the left of the word "YES". To vote against a Judge of the Court of Appeals being retained in office, darken the oval to the left of the word "NO".	To vote for a Judge of the District Court being retained in office, darken the oval to the left of the word "YES". To vote against a Judge of the District Court being retained in office, darken the oval to the left of the word "NO".	
Shall Stephen D. Hill, Topeka, Position 1, be retained in office?  <input type="radio"/> YES <input type="radio"/> NO	Shall Amy L. Harth, Paola, District 6, Division 1, be retained in office?  <input type="radio"/> YES <input type="radio"/> NO	
Shall Kim R. Schroeder, Hugoton, Position 5, be retained in office?  <input type="radio"/> YES <input type="radio"/> NO	<b>QUESTIONS SUBMITTED</b>  To vote in favor of any question submitted upon this ballot, darken the oval to the left of the word "YES"; to vote against it, darken the oval to the left of the word "NO".	
Shall Henry W. Green, Jr., Leavenworth, Position 7, be retained in office?  <input type="radio"/> YES <input type="radio"/> NO	<b>QUESTION NUMBER ONE</b>  Shall the following be adopted?  Shall Linn County, Kansas, be authorized to: (1) impose a one percent (1%) retailers' sales tax (the "Sales Tax") for the purpose of financing a portion of the costs (a) to construct, furnish and equip a law enforcement and judicial center and a government administration center, renovate other county offices and buildings and make all other related improvements (collectively the "Project"), and (b) of operating and maintaining the Project, with collection of such Sales Tax to commence on April 1, 2019, or as soon thereafter as permitted by law, and three-quarters of such Sales Tax (0.75%) to expire upon the payment of all Project costs (including the retirement of any bonds issued and payable from such Sales Tax); and (2) issue sales tax/general obligation bonds (the "Bonds") to pay a portion of the total estimated \$20,390,150 costs of the Project, and related interest and Bond issuance costs, with an expected \$3,100,000 portion of such Project costs to be paid from available funds of the County; all pursuant to the authority of K.S.A. 12-187 et seq., as amended?	
Shall Anthony J. Powell, Wichita, Position 10, be retained in office?  <input type="radio"/> YES <input type="radio"/> NO		
Shall Tom Malone, Wichita, Position 11, be retained in office?  <input type="radio"/> YES <input type="radio"/> NO		
Shall Michael B. Buser, Overland Park, Position 12, be retained in office?  <input type="radio"/> YES <input type="radio"/> NO		
Shall Melissa Taylor Standridge, Leawood, Position 13, be retained in office?  <input type="radio"/> YES <input type="radio"/> NO		
NLT	<div data-bbox="1171 2203 1536 2314" style="border: 1px solid black; padding: 5px; text-align: center;">VOTE BOTH SIDES</div> <div data-bbox="1119 2494 1588 2619" style="color: red; font-weight: bold; text-align: center;">SAMPLE BALLOT DO NOT REMOVE</div>	
	Typ:01 Seq:0006 Spl:01	

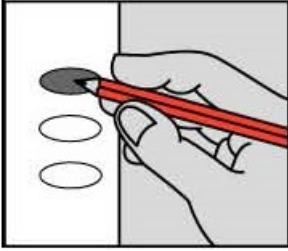
OFFICIAL BALLOT

GENERAL ELECTION

LINN COUNTY

STATE OF KANSAS

November 6, 2018



INSTRUCTIONS TO VOTER

If you tear, deface, or make a mistake and wrongfully mark a ballot, you must return it to the election board and receive a new ballot.

To vote for a person, darken the oval to the left of the person's name.

To vote for a person whose name is not printed on the ballot, write the person's name in the blank space and darken the oval to the left.

NATIONAL OFFICES

FOR UNITED STATES REPRESENTATIVE 2ND DISTRICT Vote for One

- KELLY STANDLEY St. Paul Libertarian
STEVE WATKINS Topeka Republican
PAUL DAVIS Lawrence Democratic

STATE OFFICES

FOR GOVERNOR AND LIEUTENANT GOVERNOR Vote for One Pair

- RICK KLOOS Berryton, NATHANIEL KLOOS Berryton Independent
KRIS KOBACH Lecompton, WINK HARTMAN Rose Hill Republican
GREG ORMAN Fairway, JOHN DOLL Garden City Independent
JEFF CALDWELL Leawood, MARY GERLT Kansas City Libertarian
LAURA KELLY Topeka, LYNN ROGERS Wichita Democratic

STATE OFFICES

FOR SECRETARY OF STATE Vote for One

- BRIAN "BAM" MCCLENDON Lawrence Democratic
SCOTT SCHWAB Olathe Republican
ROB HODGKINSON Stilwell Libertarian

FOR ATTORNEY GENERAL Vote for One

- SARAH G. SWAIN Lawrence Democratic
DEREK SCHMIDT Independence Republican

FOR STATE TREASURER Vote for One

- JAKE LATURNER Topeka Republican
MARC FRANCISCO Lawrence Democratic

FOR COMMISSIONER OF INSURANCE Vote for One

- VICKI SCHMIDT Topeka Republican
NATHANIEL MCLAUGHLIN Kansas City Democratic

FOR STATE REPRESENTATIVE 4TH DISTRICT Vote for One

- LAWRENCE FORBACH Mound City Democratic
TREVOR JACOBS Fort Scott Republican

STATE OFFICES

FOR STATE BOARD OF EDUCATION MEMBER 9TH DISTRICT Vote for One

- JIM PORTER Fredonia Republican

TOWNSHIP OFFICES

FOR TOWNSHIP CLERK POTOSI Vote for One

- MIKE VRBAN Republican

VOTE BOTH SIDES

SAMPLE BALLOT DO NOT REMOVE

LINN COUNTY	STATE OF KANSAS	November 6, 2018
COURT OF APPEALS JUDGE	DISTRICT COURT JUDGE	
<p>To vote for a Judge of the Court of Appeals being retained in office, darken the oval to the left of the word "YES". To vote against a Judge of the Court of Appeals being retained in office, darken the oval to the left of the word "NO".</p>	<p>To vote for a Judge of the District Court being retained in office, darken the oval to the left of the word "YES". To vote against a Judge of the District Court being retained in office, darken the oval to the left of the word "NO".</p>	
<p>Shall Stephen D. Hill, Topeka, Position 1, be retained in office?</p> <p><input type="radio"/> YES</p> <p><input type="radio"/> NO</p>	<p>Shall Amy L. Harth, Paola, District 6, Division 1, be retained in office?</p> <p><input type="radio"/> YES</p> <p><input type="radio"/> NO</p>	
<p>Shall Kim R. Schroeder, Hugoton, Position 5, be retained in office?</p> <p><input type="radio"/> YES</p> <p><input type="radio"/> NO</p>	<p style="text-align: center;"><b>QUESTIONS SUBMITTED</b></p> <p>To vote in favor of any question submitted upon this ballot, darken the oval to the left of the word "YES"; to vote against it, darken the oval to the left of the word "NO".</p>	
<p>Shall Henry W. Green, Jr., Leavenworth, Position 7, be retained in office?</p> <p><input type="radio"/> YES</p> <p><input type="radio"/> NO</p>	<p style="text-align: center;"><b>QUESTION NUMBER ONE</b></p> <p>Shall the following be adopted?</p>	
<p>Shall Anthony J. Powell, Wichita, Position 10, be retained in office?</p> <p><input type="radio"/> YES</p> <p><input type="radio"/> NO</p>	<p>Shall Linn County, Kansas, be authorized to: (1) impose a one percent (1%) retailers' sales tax (the "Sales Tax") for the purpose of financing a portion of the costs (a) to construct, furnish and equip a law enforcement and judicial center and a government administration center, renovate other county offices and buildings and make all other related improvements (collectively the "Project"), and (b) of operating and maintaining the Project, with collection of such Sales Tax to commence on April 1, 2019, or as soon thereafter as permitted by law, and three-quarters of such Sales Tax (0.75%) to expire upon the payment of all Project costs (including the retirement of any bonds issued and payable from such Sales Tax); and (2) issue sales tax/general obligation bonds (the "Bonds") to pay a portion of the total estimated \$20,390,150 costs of the Project, and related interest and Bond issuance costs, with an expected \$3,100,000 portion of such Project costs to be paid from available funds of the County; all pursuant to the authority of K.S.A. 12-187 et seq., as amended?</p>	
<p>Shall Tom Malone, Wichita, Position 11, be retained in office?</p> <p><input type="radio"/> YES</p> <p><input type="radio"/> NO</p>	<p><input type="radio"/> YES</p> <p><input type="radio"/> NO</p>	
<p>Shall Michael B. Buser, Overland Park, Position 12, be retained in office?</p> <p><input type="radio"/> YES</p> <p><input type="radio"/> NO</p>	<p><input type="radio"/> YES</p> <p><input type="radio"/> NO</p>	
<p>Shall Melissa Taylor Standridge, Leawood, Position 13, be retained in office?</p> <p><input type="radio"/> YES</p> <p><input type="radio"/> NO</p>		
		<div style="border: 1px solid black; padding: 10px; width: fit-content; margin: 0 auto;"> <p><b>VOTE BOTH SIDES</b></p> </div> <p style="color: red; font-weight: bold; font-size: 1.2em; margin-top: 20px;">SAMPLE BALLOT DO NOT REMOVE</p>
NPT	Typ:01 Seq:0007 Spl:01	



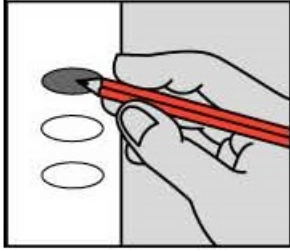
OFFICIAL BALLOT

GENERAL ELECTION

LINN COUNTY

STATE OF KANSAS

November 6, 2018



INSTRUCTIONS TO VOTER

If you tear, deface, or make a mistake and wrongfully mark a ballot, you must return it to the election board and receive a new ballot.

To vote for a person, darken the oval to the left of the person's name.

To vote for a person whose name is not printed on the ballot, write the person's name in the blank space and darken the oval to the left.

NATIONAL OFFICES

FOR UNITED STATES REPRESENTATIVE 2ND DISTRICT Vote for One

- KELLY STANDLEY St. Paul Libertarian
STEVE WATKINS Topeka Republican
PAUL DAVIS Lawrence Democratic

STATE OFFICES

FOR GOVERNOR AND LIEUTENANT GOVERNOR Vote for One Pair

- RICK KLOOS Berryton, NATHANIEL KLOOS Berryton Independent
KRIS KOBACH Lecompton, WINK HARTMAN Rose Hill Republican
GREG ORMAN Fairway, JOHN DOLL Garden City Independent
JEFF CALDWELL Leawood, MARY GERLT Kansas City Libertarian
LAURA KELLY Topeka, LYNN ROGERS Wichita Democratic

STATE OFFICES

FOR SECRETARY OF STATE Vote for One

- BRIAN "BAM" MCCLENDON Lawrence Democratic
SCOTT SCHWAB Olathe Republican
ROB HODGKINSON Stilwell Libertarian

FOR ATTORNEY GENERAL Vote for One

- SARAH G. SWAIN Lawrence Democratic
DEREK SCHMIDT Independence Republican

FOR STATE TREASURER Vote for One

- JAKE LATURNER Topeka Republican
MARC FRANCISCO Lawrence Democratic

FOR COMMISSIONER OF INSURANCE Vote for One

- VICKI SCHMIDT Topeka Republican
NATHANIEL MCLAUGHLIN Kansas City Democratic

FOR STATE REPRESENTATIVE 4TH DISTRICT Vote for One

- LAWRENCE FORBACH Mound City Democratic
TREVOR JACOBS Fort Scott Republican

STATE OFFICES

FOR STATE BOARD OF EDUCATION MEMBER 9TH DISTRICT Vote for One

- JIM PORTER Fredonia Republican

TOWNSHIP OFFICES

FOR TOWNSHIP CLERK PARIS Vote for One

- VELMA PETERSON Republican

VOTE BOTH SIDES

SAMPLE BALLOT DO NOT REMOVE

LINN COUNTY	STATE OF KANSAS	November 6, 2018
<b>COURT OF APPEALS JUDGE</b>		<b>DISTRICT COURT JUDGE</b>
To vote for a Judge of the Court of Appeals being retained in office, darken the oval to the left of the word "YES". To vote against a Judge of the Court of Appeals being retained in office, darken the oval to the left of the word "NO".	To vote for a Judge of the District Court being retained in office, darken the oval to the left of the word "YES". To vote against a Judge of the District Court being retained in office, darken the oval to the left of the word "NO".	
Shall Stephen D. Hill, Topeka, Position 1, be retained in office?  <input type="radio"/> YES <input type="radio"/> NO	Shall Amy L. Harth, Paola, District 6, Division 1, be retained in office?  <input type="radio"/> YES <input type="radio"/> NO	
Shall Kim R. Schroeder, Hugoton, Position 5, be retained in office?  <input type="radio"/> YES <input type="radio"/> NO	<b>QUESTIONS SUBMITTED</b>  To vote in favor of any question submitted upon this ballot, darken the oval to the left of the word "YES"; to vote against it, darken the oval to the left of the word "NO".	
Shall Henry W. Green, Jr., Leavenworth, Position 7, be retained in office?  <input type="radio"/> YES <input type="radio"/> NO	<b>QUESTION NUMBER ONE</b>  Shall the following be adopted?  Shall Linn County, Kansas, be authorized to: (1) impose a one percent (1%) retailers' sales tax (the "Sales Tax") for the purpose of financing a portion of the costs (a) to construct, furnish and equip a law enforcement and judicial center and a government administration center, renovate other county offices and buildings and make all other related improvements (collectively the "Project"), and (b) of operating and maintaining the Project, with collection of such Sales Tax to commence on April 1, 2019, or as soon thereafter as permitted by law, and three-quarters of such Sales Tax (0.75%) to expire upon the payment of all Project costs (including the retirement of any bonds issued and payable from such Sales Tax); and (2) issue sales tax/general obligation bonds (the "Bonds") to pay a portion of the total estimated \$20,390,150 costs of the Project, and related interest and Bond issuance costs, with an expected \$3,100,000 portion of such Project costs to be paid from available funds of the County; all pursuant to the authority of K.S.A. 12-187 et seq., as amended?	
Shall Anthony J. Powell, Wichita, Position 10, be retained in office?  <input type="radio"/> YES <input type="radio"/> NO		
Shall Tom Malone, Wichita, Position 11, be retained in office?  <input type="radio"/> YES <input type="radio"/> NO		
Shall Michael B. Buser, Overland Park, Position 12, be retained in office?  <input type="radio"/> YES <input type="radio"/> NO		
Shall Melissa Taylor Standridge, Leawood, Position 13, be retained in office?  <input type="radio"/> YES <input type="radio"/> NO		
PAT	<div data-bbox="1171 2203 1536 2314" style="border: 1px solid black; padding: 5px; text-align: center;"> <b>VOTE BOTH SIDES</b> </div> <div data-bbox="1119 2494 1588 2619" style="color: red; font-weight: bold; text-align: center;"> <b>SAMPLE BALLOT DO NOT REMOVE</b> </div>	
	Typ:01 Seq:0008 Spl:01	

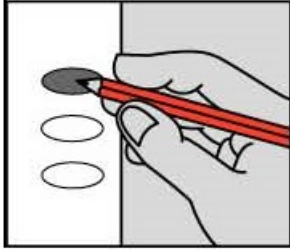
OFFICIAL BALLOT

GENERAL ELECTION

LINN COUNTY

STATE OF KANSAS

November 6, 2018



INSTRUCTIONS TO VOTER

If you tear, deface, or make a mistake and wrongfully mark a ballot, you must return it to the election board and receive a new ballot.

To vote for a person, darken the oval to the left of the person's name.

To vote for a person whose name is not printed on the ballot, write the person's name in the blank space and darken the oval to the left.

NATIONAL OFFICES

FOR UNITED STATES REPRESENTATIVE 2ND DISTRICT Vote for One

- KELLY STANDLEY St. Paul Libertarian
STEVE WATKINS Topeka Republican
PAUL DAVIS Lawrence Democratic

STATE OFFICES

FOR GOVERNOR AND LIEUTENANT GOVERNOR Vote for One Pair

- RICK KLOOS Berryton, NATHANIEL KLOOS Berryton Independent
KRIS KOBACH Lecompton, WINK HARTMAN Rose Hill Republican
GREG ORMAN Fairway, JOHN DOLL Garden City Independent
JEFF CALDWELL Leawood, MARY GERLT Kansas City Libertarian
LAURA KELLY Topeka, LYNN ROGERS Wichita Democratic

STATE OFFICES

FOR SECRETARY OF STATE Vote for One

- BRIAN "BAM" MCCLENDON Lawrence Democratic
SCOTT SCHWAB Olathe Republican
ROB HODGKINSON Stilwell Libertarian

FOR ATTORNEY GENERAL Vote for One

- SARAH G. SWAIN Lawrence Democratic
DEREK SCHMIDT Independence Republican

FOR STATE TREASURER Vote for One

- JAKE LATURNER Topeka Republican
MARC FRANCISCO Lawrence Democratic

FOR COMMISSIONER OF INSURANCE Vote for One

- VICKI SCHMIDT Topeka Republican
NATHANIEL MCLAUGHLIN Kansas City Democratic

FOR STATE REPRESENTATIVE 4TH DISTRICT Vote for One

- TREVOR JACOBS Fort Scott Republican
LAWRENCE FORBACH Mound City Democratic

STATE OFFICES

FOR STATE BOARD OF EDUCATION MEMBER 9TH DISTRICT Vote for One

- JIM PORTER Fredonia Republican

COUNTY OFFICES

FOR COUNTY COMMISSIONER DISTRICT 1 Vote for One

- RICK JAMES Republican

TOWNSHIP OFFICES

FOR TOWNSHIP CLERK SCOTT Vote for One

Blank oval for marking

VOTE BOTH SIDES

SAMPLE BALLOT DO NOT REMOVE

LINN COUNTY	STATE OF KANSAS	November 6, 2018
<b>COURT OF APPEALS JUDGE</b>		<b>DISTRICT COURT JUDGE</b>
To vote for a Judge of the Court of Appeals being retained in office, darken the oval to the left of the word "YES". To vote against a Judge of the Court of Appeals being retained in office, darken the oval to the left of the word "NO".	To vote for a Judge of the District Court being retained in office, darken the oval to the left of the word "YES". To vote against a Judge of the District Court being retained in office, darken the oval to the left of the word "NO".	
Shall Stephen D. Hill, Topeka, Position 1, be retained in office?  <input type="radio"/> YES <input type="radio"/> NO	Shall Amy L. Harth, Paola, District 6, Division 1, be retained in office?  <input type="radio"/> YES <input type="radio"/> NO	
Shall Kim R. Schroeder, Hugoton, Position 5, be retained in office?  <input type="radio"/> YES <input type="radio"/> NO	<b>QUESTIONS SUBMITTED</b>  To vote in favor of any question submitted upon this ballot, darken the oval to the left of the word "YES"; to vote against it, darken the oval to the left of the word "NO".	
Shall Henry W. Green, Jr., Leavenworth, Position 7, be retained in office?  <input type="radio"/> YES <input type="radio"/> NO	<b>QUESTION NUMBER ONE</b>  Shall the following be adopted?  Shall Linn County, Kansas, be authorized to: (1) impose a one percent (1%) retailers' sales tax (the "Sales Tax") for the purpose of financing a portion of the costs (a) to construct, furnish and equip a law enforcement and judicial center and a government administration center, renovate other county offices and buildings and make all other related improvements (collectively the "Project"), and (b) of operating and maintaining the Project, with collection of such Sales Tax to commence on April 1, 2019, or as soon thereafter as permitted by law, and three-quarters of such Sales Tax (0.75%) to expire upon the payment of all Project costs (including the retirement of any bonds issued and payable from such Sales Tax); and (2) issue sales tax/general obligation bonds (the "Bonds") to pay a portion of the total estimated \$20,390,150 costs of the Project, and related interest and Bond issuance costs, with an expected \$3,100,000 portion of such Project costs to be paid from available funds of the County; all pursuant to the authority of K.S.A. 12-187 et seq., as amended?	
Shall Anthony J. Powell, Wichita, Position 10, be retained in office?  <input type="radio"/> YES <input type="radio"/> NO		
Shall Tom Malone, Wichita, Position 11, be retained in office?  <input type="radio"/> YES <input type="radio"/> NO		
Shall Michael B. Buser, Overland Park, Position 12, be retained in office?  <input type="radio"/> YES <input type="radio"/> NO		
Shall Melissa Taylor Standridge, Leawood, Position 13, be retained in office?  <input type="radio"/> YES <input type="radio"/> NO		
SCT	Typ:01 Seq:0009 Spl:01	

**VOTE BOTH SIDES**

**SAMPLE BALLOT  
DO NOT REMOVE**

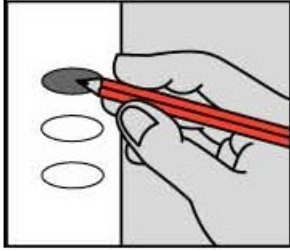
OFFICIAL BALLOT

GENERAL ELECTION

LINN COUNTY

STATE OF KANSAS

November 6, 2018



INSTRUCTIONS TO VOTER

If you tear, deface, or make a mistake and wrongfully mark a ballot, you must return it to the election board and receive a new ballot.

To vote for a person, darken the oval to the left of the person's name.

To vote for a person whose name is not printed on the ballot, write the person's name in the blank space and darken the oval to the left.

NATIONAL OFFICES

FOR UNITED STATES REPRESENTATIVE 2ND DISTRICT Vote for One

- KELLY STANDLEY St. Paul Libertarian
STEVE WATKINS Topeka Republican
PAUL DAVIS Lawrence Democratic

STATE OFFICES

FOR GOVERNOR AND LIEUTENANT GOVERNOR Vote for One Pair

- RICK KLOOS Berryton Independent
NATHANIEL KLOOS Berryton Independent
KRIS KOBACH Lecompton Republican
WINK HARTMAN Rose Hill Republican
GREG ORMAN Fairway Independent
JOHN DOLL Garden City Independent
JEFF CALDWELL Leawood Libertarian
MARY GERLT Kansas City Libertarian
LAURA KELLY Topeka Democratic
LYNN ROGERS Wichita Democratic

STATE OFFICES

FOR SECRETARY OF STATE Vote for One

- BRIAN "BAM" MCCLENDON Lawrence Democratic
SCOTT SCHWAB Olathe Republican
ROB HODGKINSON Stilwell Libertarian

FOR ATTORNEY GENERAL Vote for One

- SARAH G. SWAIN Lawrence Democratic
DEREK SCHMIDT Independence Republican

FOR STATE TREASURER Vote for One

- JAKE LATURNER Topeka Republican
MARC FRANCISCO Lawrence Democratic

FOR COMMISSIONER OF INSURANCE Vote for One

- VICKI SCHMIDT Topeka Republican
NATHANIEL MCLAUGHLIN Kansas City Democratic

FOR STATE REPRESENTATIVE 4TH DISTRICT Vote for One

- TREVOR JACOBS Fort Scott Republican
LAWRENCE FORBACH Mound City Democratic

STATE OFFICES

FOR STATE BOARD OF EDUCATION MEMBER 9TH DISTRICT Vote for One

- JIM PORTER Fredonia Republican

TOWNSHIP OFFICES

FOR TOWNSHIP CLERK SHERIDAN Vote for One

- KAREN SPRINGER Republican

VOTE BOTH SIDES

SAMPLE BALLOT DO NOT REMOVE

LINN COUNTY	STATE OF KANSAS	November 6, 2018
<b>COURT OF APPEALS JUDGE</b>	<b>DISTRICT COURT JUDGE</b>	
To vote for a Judge of the Court of Appeals being retained in office, darken the oval to the left of the word "YES". To vote against a Judge of the Court of Appeals being retained in office, darken the oval to the left of the word "NO".	To vote for a Judge of the District Court being retained in office, darken the oval to the left of the word "YES". To vote against a Judge of the District Court being retained in office, darken the oval to the left of the word "NO".	
Shall Stephen D. Hill, Topeka, Position 1, be retained in office?  <input type="radio"/> YES <input type="radio"/> NO	Shall Amy L. Harth, Paola, District 6, Division 1, be retained in office?  <input type="radio"/> YES <input type="radio"/> NO	
Shall Kim R. Schroeder, Hugoton, Position 5, be retained in office?  <input type="radio"/> YES <input type="radio"/> NO	<b>QUESTIONS SUBMITTED</b>	
	To vote in favor of any question submitted upon this ballot, darken the oval to the left of the word "YES"; to vote against it, darken the oval to the left of the word "NO".	
Shall Henry W. Green, Jr., Leavenworth, Position 7, be retained in office?  <input type="radio"/> YES <input type="radio"/> NO	<b>QUESTION NUMBER ONE</b>	
	Shall the following be adopted?  Shall Linn County, Kansas, be authorized to: (1) impose a one percent (1%) retailers' sales tax (the "Sales Tax") for the purpose of financing a portion of the costs (a) to construct, furnish and equip a law enforcement and judicial center and a government administration center, renovate other county offices and buildings and make all other related improvements (collectively the "Project"), and (b) of operating and maintaining the Project, with collection of such Sales Tax to commence on April 1, 2019, or as soon thereafter as permitted by law, and three-quarters of such Sales Tax (0.75%) to expire upon the payment of all Project costs (including the retirement of any bonds issued and payable from such Sales Tax); and (2) issue sales tax/general obligation bonds (the "Bonds") to pay a portion of the total estimated \$20,390,150 costs of the Project, and related interest and Bond issuance costs, with an expected \$3,100,000 portion of such Project costs to be paid from available funds of the County; all pursuant to the authority of K.S.A. 12-187 et seq., as amended?	
Shall Anthony J. Powell, Wichita, Position 10, be retained in office?  <input type="radio"/> YES <input type="radio"/> NO		
Shall Tom Malone, Wichita, Position 11, be retained in office?  <input type="radio"/> YES <input type="radio"/> NO		
Shall Michael B. Buser, Overland Park, Position 12, be retained in office?  <input type="radio"/> YES <input type="radio"/> NO		
Shall Melissa Taylor Standridge, Leawood, Position 13, be retained in office?  <input type="radio"/> YES <input type="radio"/> NO	<b>QUESTION NUMBER TWO</b>	
	Shall the following be adopted?  Shall a Library District consisting of the City of Prescott and Sheridan Township, all in Linn County, Kansas, be established and maintained pursuant to K.S.A. 12-1236?  <input type="radio"/> YES <input type="radio"/> NO	
		<b>VOTE BOTH SIDES</b>
SHT	Typ:01 Seq:0010 Spl:01	<b>SAMPLE BALLOT DO NOT REMOVE</b>



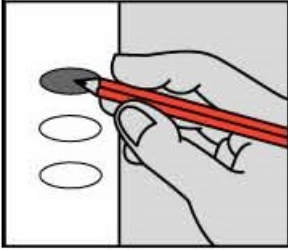
OFFICIAL BALLOT

GENERAL ELECTION

LINN COUNTY

STATE OF KANSAS

November 6, 2018



INSTRUCTIONS TO VOTER

If you tear, deface, or make a mistake and wrongfully mark a ballot, you must return it to the election board and receive a new ballot.

To vote for a person, darken the oval to the left of the person's name.

To vote for a person whose name is not printed on the ballot, write the person's name in the blank space and darken the oval to the left.

NATIONAL OFFICES

FOR UNITED STATES REPRESENTATIVE 2ND DISTRICT Vote for One

- KELLY STANDLEY St. Paul Libertarian
STEVE WATKINS Topeka Republican
PAUL DAVIS Lawrence Democratic

STATE OFFICES

FOR GOVERNOR AND LIEUTENANT GOVERNOR Vote for One Pair

- RICK KLOOS Berryton Independent
NATHANIEL KLOOS Berryton Independent
KRIS KOBACH Lecompton Republican
WINK HARTMAN Rose Hill Republican
GREG ORMAN Fairway Independent
JOHN DOLL Garden City Independent
JEFF CALDWELL Leawood Libertarian
MARY GERLT Kansas City Libertarian
LAURA KELLY Topeka Democratic
LYNN ROGERS Wichita Democratic

STATE OFFICES

FOR SECRETARY OF STATE Vote for One

- BRIAN "BAM" MCCLENDON Lawrence Democratic
SCOTT SCHWAB Olathe Republican
ROB HODGKINSON Stilwell Libertarian

FOR ATTORNEY GENERAL Vote for One

- SARAH G. SWAIN Lawrence Democratic
DEREK SCHMIDT Independence Republican

FOR STATE TREASURER Vote for One

- JAKE LATURNER Topeka Republican
MARC FRANCISCO Lawrence Democratic

FOR COMMISSIONER OF INSURANCE Vote for One

- VICKI SCHMIDT Topeka Republican
NATHANIEL MCLAUGHLIN Kansas City Democratic

FOR STATE REPRESENTATIVE 4TH DISTRICT Vote for One

- LAWRENCE FORBACH Mound City Democratic
TREVOR JACOBS Fort Scott Republican

STATE OFFICES

FOR STATE BOARD OF EDUCATION MEMBER 9TH DISTRICT Vote for One

- JIM PORTER Fredonia Republican

COUNTY OFFICES

FOR COUNTY COMMISSIONER DISTRICT 1 Vote for One

- RICK JAMES Republican

TOWNSHIP OFFICES

FOR TOWNSHIP CLERK LINCOLN Vote for One

- JOE JUNIOR TURPEN Democratic

VOTE BOTH SIDES

SAMPLE BALLOT DO NOT REMOVE

LINN COUNTY	STATE OF KANSAS	November 6, 2018
<b>COURT OF APPEALS JUDGE</b>	<b>DISTRICT COURT JUDGE</b>	
To vote for a Judge of the Court of Appeals being retained in office, darken the oval to the left of the word "YES". To vote against a Judge of the Court of Appeals being retained in office, darken the oval to the left of the word "NO".	To vote for a Judge of the District Court being retained in office, darken the oval to the left of the word "YES". To vote against a Judge of the District Court being retained in office, darken the oval to the left of the word "NO".	
Shall Stephen D. Hill, Topeka, Position 1, be retained in office?  <input type="radio"/> YES <input type="radio"/> NO	Shall Amy L. Harth, Paola, District 6, Division 1, be retained in office?  <input type="radio"/> YES <input type="radio"/> NO	
Shall Kim R. Schroeder, Hugoton, Position 5, be retained in office?  <input type="radio"/> YES <input type="radio"/> NO	<b>QUESTIONS SUBMITTED</b>	
	To vote in favor of any question submitted upon this ballot, darken the oval to the left of the word "YES"; to vote against it, darken the oval to the left of the word "NO".	
Shall Henry W. Green, Jr., Leavenworth, Position 7, be retained in office?  <input type="radio"/> YES <input type="radio"/> NO	<b>QUESTION NUMBER ONE</b>	
	Shall the following be adopted?  Shall Linn County, Kansas, be authorized to: (1) impose a one percent (1%) retailers' sales tax (the "Sales Tax") for the purpose of financing a portion of the costs (a) to construct, furnish and equip a law enforcement and judicial center and a government administration center, renovate other county offices and buildings and make all other related improvements (collectively the "Project"), and (b) of operating and maintaining the Project, with collection of such Sales Tax to commence on April 1, 2019, or as soon thereafter as permitted by law, and three-quarters of such Sales Tax (0.75%) to expire upon the payment of all Project costs (including the retirement of any bonds issued and payable from such Sales Tax); and (2) issue sales tax/general obligation bonds (the "Bonds") to pay a portion of the total estimated \$20,390,150 costs of the Project, and related interest and Bond issuance costs, with an expected \$3,100,000 portion of such Project costs to be paid from available funds of the County; all pursuant to the authority of K.S.A. 12-187 et seq., as amended?	
Shall Anthony J. Powell, Wichita, Position 10, be retained in office?  <input type="radio"/> YES <input type="radio"/> NO	<input type="radio"/> YES <input type="radio"/> NO	
Shall Tom Malone, Wichita, Position 11, be retained in office?  <input type="radio"/> YES <input type="radio"/> NO		
Shall Michael B. Buser, Overland Park, Position 12, be retained in office?  <input type="radio"/> YES <input type="radio"/> NO		
Shall Melissa Taylor Standridge, Leawood, Position 13, be retained in office?  <input type="radio"/> YES <input type="radio"/> NO		
		<b>VOTE BOTH SIDES</b>
SLT	Typ:01 Seq:0011 Spl:01	<b>SAMPLE BALLOT DO NOT REMOVE</b>

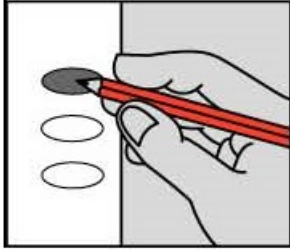
OFFICIAL BALLOT

GENERAL ELECTION

LINN COUNTY

STATE OF KANSAS

November 6, 2018



INSTRUCTIONS TO VOTER

If you tear, deface, or make a mistake and wrongfully mark a ballot, you must return it to the election board and receive a new ballot.

To vote for a person, darken the oval to the left of the person's name.

To vote for a person whose name is not printed on the ballot, write the person's name in the blank space and darken the oval to the left.

NATIONAL OFFICES

FOR UNITED STATES REPRESENTATIVE 2ND DISTRICT Vote for One

- KELLY STANDLEY St. Paul Libertarian
STEVE WATKINS Topeka Republican
PAUL DAVIS Lawrence Democratic

STATE OFFICES

FOR GOVERNOR AND LIEUTENANT GOVERNOR Vote for One Pair

- RICK KLOOS Berryton, NATHANIEL KLOOS Berryton Independent
KRIS KOBACH Lecompton, WINK HARTMAN Rose Hill Republican
GREG ORMAN Fairway, JOHN DOLL Garden City Independent
JEFF CALDWELL Leawood, MARY GERLT Kansas City Libertarian
LAURA KELLY Topeka, LYNN ROGERS Wichita Democratic

STATE OFFICES

FOR SECRETARY OF STATE Vote for One

- BRIAN "BAM" MCCLENDON Lawrence Democratic
SCOTT SCHWAB Olathe Republican
ROB HODGKINSON Stilwell Libertarian

FOR ATTORNEY GENERAL Vote for One

- SARAH G. SWAIN Lawrence Democratic
DEREK SCHMIDT Independence Republican

FOR STATE TREASURER Vote for One

- JAKE LATURNER Topeka Republican
MARC FRANCISCO Lawrence Democratic

FOR COMMISSIONER OF INSURANCE Vote for One

- VICKI SCHMIDT Topeka Republican
NATHANIEL MCLAUGHLIN Kansas City Democratic

FOR STATE REPRESENTATIVE 4TH DISTRICT Vote for One

- TREVOR JACOBS Fort Scott Republican
LAWRENCE FORBACH Mound City Democratic

STATE OFFICES

FOR STATE BOARD OF EDUCATION MEMBER 9TH DISTRICT Vote for One

- JIM PORTER Fredonia Republican

TOWNSHIP OFFICES

FOR TOWNSHIP CLERK POTOSI Vote for One

- MIKE VRBAN Republican

VOTE BOTH SIDES

SAMPLE BALLOT DO NOT REMOVE

LINN COUNTY	STATE OF KANSAS	November 6, 2018
<b>COURT OF APPEALS JUDGE</b>		<b>DISTRICT COURT JUDGE</b>
To vote for a Judge of the Court of Appeals being retained in office, darken the oval to the left of the word "YES". To vote against a Judge of the Court of Appeals being retained in office, darken the oval to the left of the word "NO".	To vote for a Judge of the District Court being retained in office, darken the oval to the left of the word "YES". To vote against a Judge of the District Court being retained in office, darken the oval to the left of the word "NO".	
Shall Stephen D. Hill, Topeka, Position 1, be retained in office?  <input type="radio"/> YES <input type="radio"/> NO	Shall Amy L. Harth, Paola, District 6, Division 1, be retained in office?  <input type="radio"/> YES <input type="radio"/> NO	
Shall Kim R. Schroeder, Hugoton, Position 5, be retained in office?  <input type="radio"/> YES <input type="radio"/> NO	<b>QUESTIONS SUBMITTED</b>  To vote in favor of any question submitted upon this ballot, darken the oval to the left of the word "YES"; to vote against it, darken the oval to the left of the word "NO".	
Shall Henry W. Green, Jr., Leavenworth, Position 7, be retained in office?  <input type="radio"/> YES <input type="radio"/> NO	<b>QUESTION NUMBER ONE</b>  Shall the following be adopted?  Shall Linn County, Kansas, be authorized to: (1) impose a one percent (1%) retailers' sales tax (the "Sales Tax") for the purpose of financing a portion of the costs (a) to construct, furnish and equip a law enforcement and judicial center and a government administration center, renovate other county offices and buildings and make all other related improvements (collectively the "Project"), and (b) of operating and maintaining the Project, with collection of such Sales Tax to commence on April 1, 2019, or as soon thereafter as permitted by law, and three-quarters of such Sales Tax (0.75%) to expire upon the payment of all Project costs (including the retirement of any bonds issued and payable from such Sales Tax); and (2) issue sales tax/general obligation bonds (the "Bonds") to pay a portion of the total estimated \$20,390,150 costs of the Project, and related interest and Bond issuance costs, with an expected \$3,100,000 portion of such Project costs to be paid from available funds of the County; all pursuant to the authority of K.S.A. 12-187 et seq., as amended?	
Shall Anthony J. Powell, Wichita, Position 10, be retained in office?  <input type="radio"/> YES <input type="radio"/> NO		
Shall Tom Malone, Wichita, Position 11, be retained in office?  <input type="radio"/> YES <input type="radio"/> NO		
Shall Michael B. Buser, Overland Park, Position 12, be retained in office?  <input type="radio"/> YES <input type="radio"/> NO		
Shall Melissa Taylor Standridge, Leawood, Position 13, be retained in office?  <input type="radio"/> YES <input type="radio"/> NO		
	<div data-bbox="1171 2203 1536 2314" style="border: 1px solid black; padding: 5px; display: inline-block;"> <b>VOTE BOTH SIDES</b> </div>  <div data-bbox="1119 2494 1588 2619" style="border: 2px solid red; padding: 5px; display: inline-block; color: red;"> <b>SAMPLE BALLOT DO NOT REMOVE</b> </div>	
SPT	Typ:01 Seq:0012 Spl:01	

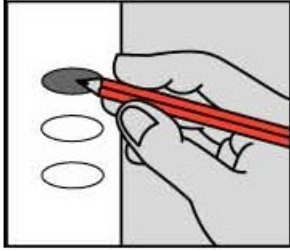
OFFICIAL BALLOT

GENERAL ELECTION

LINN COUNTY

STATE OF KANSAS

November 6, 2018



INSTRUCTIONS TO VOTER

If you tear, deface, or make a mistake and wrongfully mark a ballot, you must return it to the election board and receive a new ballot.

To vote for a person, darken the oval to the left of the person's name.

To vote for a person whose name is not printed on the ballot, write the person's name in the blank space and darken the oval to the left.

NATIONAL OFFICES

FOR UNITED STATES REPRESENTATIVE 2ND DISTRICT Vote for One

- KELLY STANDLEY St. Paul Libertarian
STEVE WATKINS Topeka Republican
PAUL DAVIS Lawrence Democratic

STATE OFFICES

FOR GOVERNOR AND LIEUTENANT GOVERNOR Vote for One Pair

- RICK KLOOS Berryton NATHANIEL KLOOS Berryton Independent
KRIS KOBACH Lecompton WINK HARTMAN Rose Hill Republican
GREG ORMAN Fairway JOHN DOLL Garden City Independent
JEFF CALDWELL Leawood MARY GERLT Kansas City Libertarian
LAURA KELLY Topeka LYNN ROGERS Wichita Democratic

STATE OFFICES

FOR SECRETARY OF STATE Vote for One

- BRIAN "BAM" MCCLENDON Lawrence Democratic
SCOTT SCHWAB Olathe Republican
ROB HODGKINSON Stilwell Libertarian

FOR ATTORNEY GENERAL Vote for One

- SARAH G. SWAIN Lawrence Democratic
DEREK SCHMIDT Independence Republican

FOR STATE TREASURER Vote for One

- JAKE LATURNER Topeka Republican
MARC FRANCISCO Lawrence Democratic

FOR COMMISSIONER OF INSURANCE Vote for One

- VICKI SCHMIDT Topeka Republican
NATHANIEL MCLAUGHLIN Kansas City Democratic

FOR STATE REPRESENTATIVE 4TH DISTRICT Vote for One

- LAWRENCE FORBACH Mound City Democratic
TREVOR JACOBS Fort Scott Republican

STATE OFFICES

FOR STATE BOARD OF EDUCATION MEMBER 9TH DISTRICT Vote for One

- JIM PORTER Fredonia Republican

TOWNSHIP OFFICES

FOR TOWNSHIP CLERK STANTON Vote for One

- [Blank oval]

VOTE BOTH SIDES

SAMPLE BALLOT DO NOT REMOVE

LINN COUNTY	STATE OF KANSAS	November 6, 2018
<b>COURT OF APPEALS JUDGE</b>		<b>DISTRICT COURT JUDGE</b>
To vote for a Judge of the Court of Appeals being retained in office, darken the oval to the left of the word "YES". To vote against a Judge of the Court of Appeals being retained in office, darken the oval to the left of the word "NO".	To vote for a Judge of the District Court being retained in office, darken the oval to the left of the word "YES". To vote against a Judge of the District Court being retained in office, darken the oval to the left of the word "NO".	
Shall Stephen D. Hill, Topeka, Position 1, be retained in office?  <input type="radio"/> YES <input type="radio"/> NO	Shall Amy L. Harth, Paola, District 6, Division 1, be retained in office?  <input type="radio"/> YES <input type="radio"/> NO	
Shall Kim R. Schroeder, Hugoton, Position 5, be retained in office?  <input type="radio"/> YES <input type="radio"/> NO	<b>QUESTIONS SUBMITTED</b>  To vote in favor of any question submitted upon this ballot, darken the oval to the left of the word "YES"; to vote against it, darken the oval to the left of the word "NO".	
Shall Henry W. Green, Jr., Leavenworth, Position 7, be retained in office?  <input type="radio"/> YES <input type="radio"/> NO	<b>QUESTION NUMBER ONE</b>  Shall the following be adopted?  Shall Linn County, Kansas, be authorized to: (1) impose a one percent (1%) retailers' sales tax (the "Sales Tax") for the purpose of financing a portion of the costs (a) to construct, furnish and equip a law enforcement and judicial center and a government administration center, renovate other county offices and buildings and make all other related improvements (collectively the "Project"), and (b) of operating and maintaining the Project, with collection of such Sales Tax to commence on April 1, 2019, or as soon thereafter as permitted by law, and three-quarters of such Sales Tax (0.75%) to expire upon the payment of all Project costs (including the retirement of any bonds issued and payable from such Sales Tax); and (2) issue sales tax/general obligation bonds (the "Bonds") to pay a portion of the total estimated \$20,390,150 costs of the Project, and related interest and Bond issuance costs, with an expected \$3,100,000 portion of such Project costs to be paid from available funds of the County; all pursuant to the authority of K.S.A. 12-187 et seq., as amended?	
Shall Anthony J. Powell, Wichita, Position 10, be retained in office?  <input type="radio"/> YES <input type="radio"/> NO		
Shall Tom Malone, Wichita, Position 11, be retained in office?  <input type="radio"/> YES <input type="radio"/> NO		
Shall Michael B. Buser, Overland Park, Position 12, be retained in office?  <input type="radio"/> YES <input type="radio"/> NO		
Shall Melissa Taylor Standridge, Leawood, Position 13, be retained in office?  <input type="radio"/> YES <input type="radio"/> NO		
	<div data-bbox="1171 2203 1536 2314" style="border: 1px solid black; padding: 5px; text-align: center;"> <b>VOTE BOTH SIDES</b> </div> <div data-bbox="1119 2494 1588 2619" style="color: red; font-weight: bold; text-align: center;"> <b>SAMPLE BALLOT DO NOT REMOVE</b> </div>	
STT	Typ:01 Seq:0013 Spl:01	



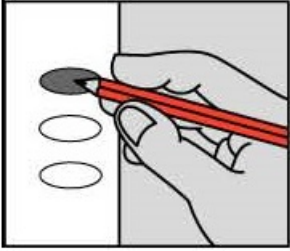
OFFICIAL BALLOT

GENERAL ELECTION

LINN COUNTY

STATE OF KANSAS

November 6, 2018



INSTRUCTIONS TO VOTER

If you tear, deface, or make a mistake and wrongfully mark a ballot, you must return it to the election board and receive a new ballot.

To vote for a person, darken the oval to the left of the person's name.

To vote for a person whose name is not printed on the ballot, write the person's name in the blank space and darken the oval to the left.

STATE OFFICES

STATE OFFICES

FOR SECRETARY OF STATE
Vote for One

FOR STATE BOARD OF EDUCATION
MEMBER
9TH DISTRICT
Vote for One

- BRIAN "BAM" MCCLENDON
Lawrence Democratic
SCOTT SCHWAB
Olathe Republican
ROB HODGKINSON
Stilwell Libertarian

- JIM PORTER
Fredonia Republican

TOWNSHIP OFFICES

FOR TOWNSHIP CLERK
VALLEY
Vote for One

- THOMAS W. PATTERSON
Republican

NATIONAL OFFICES

FOR ATTORNEY GENERAL
Vote for One

FOR UNITED STATES REPRESENTATIVE
2ND DISTRICT
Vote for One

- SARAH G. SWAIN
Lawrence Democratic
DEREK SCHMIDT
Independence Republican

- KELLY STANDLEY
St. Paul Libertarian
STEVE WATKINS
Topeka Republican
PAUL DAVIS
Lawrence Democratic

FOR STATE TREASURER
Vote for One

- JAKE LATURNER
Topeka Republican
MARCI FRANCISCO
Lawrence Democratic

STATE OFFICES

FOR GOVERNOR AND LIEUTENANT
GOVERNOR
Vote for One Pair

FOR COMMISSIONER OF INSURANCE
Vote for One

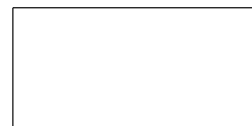
- RICK KLOOS
Berryton Independent
NATHANIEL KLOOS
Berryton Independent
KRIS KOBACH
Lecompton Republican
WINK HARTMAN
Rose Hill Republican
GREG ORMAN
Fairway Independent
JOHN DOLL
Garden City Independent
JEFF CALDWELL
Leawood Libertarian
MARY GERLT
Kansas City Libertarian
LAURA KELLY
Topeka Democratic
LYNN ROGERS
Wichita Democratic

- VICKI SCHMIDT
Topeka Republican
NATHANIEL MCLAUGHLIN
Kansas City Democratic

FOR STATE REPRESENTATIVE
4TH DISTRICT
Vote for One

- LAWRENCE FORBACH
Mound City Democratic
TREVOR JACOBS
Fort Scott Republican

VOTE BOTH SIDES



SAMPLE BALLOT
DO NOT REMOVE

VAT

Typ:01 Seq:0014 Spl:01

LINN COUNTY	STATE OF KANSAS	November 6, 2018
<b>COURT OF APPEALS JUDGE</b>		<b>DISTRICT COURT JUDGE</b>
To vote for a Judge of the Court of Appeals being retained in office, darken the oval to the left of the word "YES". To vote against a Judge of the Court of Appeals being retained in office, darken the oval to the left of the word "NO".	To vote for a Judge of the District Court being retained in office, darken the oval to the left of the word "YES". To vote against a Judge of the District Court being retained in office, darken the oval to the left of the word "NO".	
Shall Stephen D. Hill, Topeka, Position 1, be retained in office?  <input type="radio"/> YES <input type="radio"/> NO	Shall Amy L. Harth, Paola, District 6, Division 1, be retained in office?  <input type="radio"/> YES <input type="radio"/> NO	
Shall Kim R. Schroeder, Hugoton, Position 5, be retained in office?  <input type="radio"/> YES <input type="radio"/> NO	<b>QUESTIONS SUBMITTED</b>  To vote in favor of any question submitted upon this ballot, darken the oval to the left of the word "YES"; to vote against it, darken the oval to the left of the word "NO".	
Shall Henry W. Green, Jr., Leavenworth, Position 7, be retained in office?  <input type="radio"/> YES <input type="radio"/> NO	<b>QUESTION NUMBER ONE</b>  Shall the following be adopted?  Shall Linn County, Kansas, be authorized to: (1) impose a one percent (1%) retailers' sales tax (the "Sales Tax") for the purpose of financing a portion of the costs (a) to construct, furnish and equip a law enforcement and judicial center and a government administration center, renovate other county offices and buildings and make all other related improvements (collectively the "Project"), and (b) of operating and maintaining the Project, with collection of such Sales Tax to commence on April 1, 2019, or as soon thereafter as permitted by law, and three-quarters of such Sales Tax (0.75%) to expire upon the payment of all Project costs (including the retirement of any bonds issued and payable from such Sales Tax); and (2) issue sales tax/general obligation bonds (the "Bonds") to pay a portion of the total estimated \$20,390,150 costs of the Project, and related interest and Bond issuance costs, with an expected \$3,100,000 portion of such Project costs to be paid from available funds of the County; all pursuant to the authority of K.S.A. 12-187 et seq., as amended?	
Shall Anthony J. Powell, Wichita, Position 10, be retained in office?  <input type="radio"/> YES <input type="radio"/> NO		
Shall Tom Malone, Wichita, Position 11, be retained in office?  <input type="radio"/> YES <input type="radio"/> NO		
Shall Michael B. Buser, Overland Park, Position 12, be retained in office?  <input type="radio"/> YES <input type="radio"/> NO		
Shall Melissa Taylor Standridge, Leawood, Position 13, be retained in office?  <input type="radio"/> YES <input type="radio"/> NO		
VAT	<div data-bbox="1171 2203 1536 2314" style="border: 1px solid black; padding: 5px; text-align: center;"> <b>VOTE BOTH SIDES</b> </div> <div data-bbox="1119 2494 1588 2619" style="border: 2px solid red; padding: 5px; text-align: center; color: red;"> <b>SAMPLE BALLOT DO NOT REMOVE</b> </div>	
	Typ:01 Seq:0014 Spl:01	